



PARRS WAY, W6

£1,100,000

Two bedrooms
Two bathrooms
Air-conditioning
Balcony
Secure underground parking
Health club including swimming pool

@marshandparsons
marshandparsons.co.uk

MARSH &
PARSONS



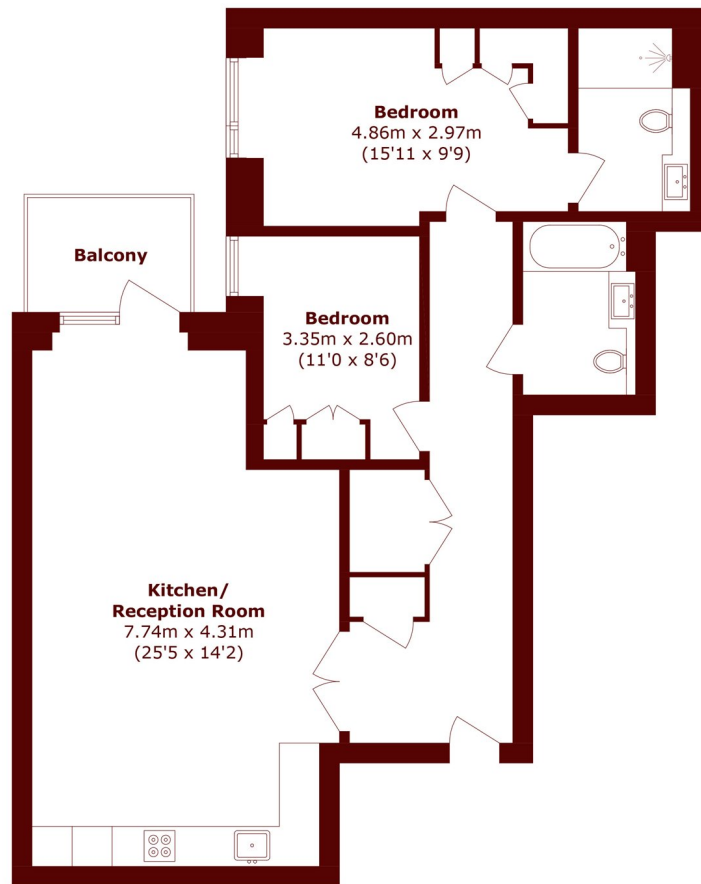
ABOUT THE PROPERTY

This premium two bedroom, two bathroom luxury apartment is situated inside Holland House, part of the award-winning Fulham Reach riverside development by St George.

Fulham Reach is a located along the river a short walk from Hammersmith.



STEP INSIDE PARRS WAY



First Floor

Total area (approx.): 83.0 sq. m (893.4 sq. ft)
Balcony area (approx.): 4.2 sq. m (45.2 sq. ft)

Bishops Park
020 7993 9888

Energy Rating: We aim to make our particulars both accurate and reliable. However, they are not guaranteed; nor do they form part of an offer or contract. If you require clarification on any points then please contact us, especially if you're traveling some distance to view. Please note that appliances and heating systems have not been tested and therefore no warranties can be given as to their good working order

**MARSH &
PARSONS**