



## WHARF STREET, SE8

£675,000

Riverside duplex apartment  
Three bedrooms  
Two bathrooms  
Wraparound terrace  
Allocated underground parking  
Energy rating: c

@marshandparsons  
marshandparsons.co.uk

MARSH &  
PARSONS



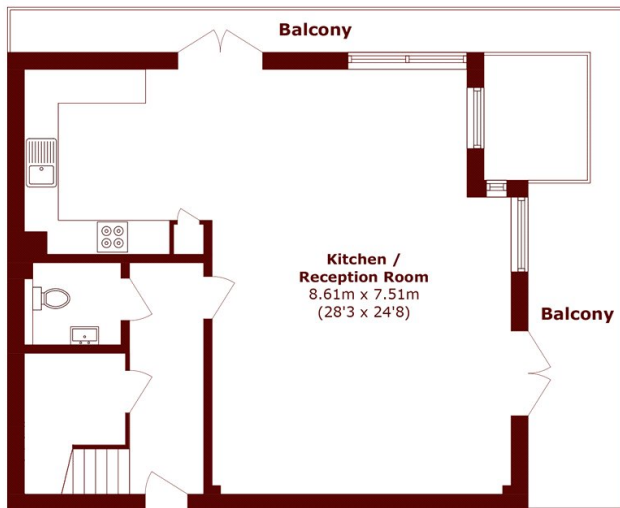
# ABOUT THE PROPERTY

A stunning riverside duplex apartment featuring floor-to-ceiling windows and a wraparound west facing terrace overlooking the River Thames. The property includes an allocated underground parking space and the convenience of a 24-hour concierge. Inside, the apartment boasts an exceptionally spacious double-aspect living room, and a recently renovated open plan kitchen. There are three bedrooms, one with its own private balcony, another with an en suite. A contemporary family bathroom completes the accommodation.

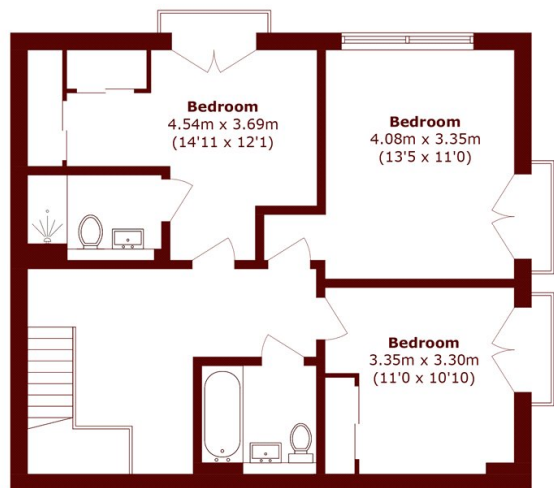
Just a short walk away, you'll find a range of riverfront pubs, restaurants and supermarkets, as well as easy access to central Greenwich and Deptford High Street.



# STEP INSIDE WHARF STREET



**Fourth Floor**



**Fifth Floor**

Total area (approx.): 127.3 sq. m (1370.2 sq. ft)  
Balcony area (approx.): 20.6 sq. m (221.7 sq. ft)

**Greenwich**  
020 8312 8312

Energy Rating: C We aim to make our particulars both accurate and reliable. However, they are not guaranteed; nor do they form part of an offer or contract. If you require clarification on any points then please contact us, especially if you're traveling some distance to view. Please note that appliances and heating systems have not been tested and therefore no warranties can be given as to their good working order

**MARSH &  
PARSONS**