



RUTLAND HOUSE, NW6

£2,749 per week

Two Double Bedrooms
Two Bathrooms
Private Entrance
Private Patio
Communal Gardens
Great Location

@marshandparsons
marshandparsons.co.uk

MARSH &
PARSONS

ABOUT THE PROPERTY

A spacious two-bedroom apartment in a red-brick mansion building with its own private entrance. Layout includes a large reception with a semi open-plan kitchen, two good-sized double bedrooms and modern en-suite bathrooms with walk-in showers. The property has a guest WC, wooden floors, communal gardens and a private patio.

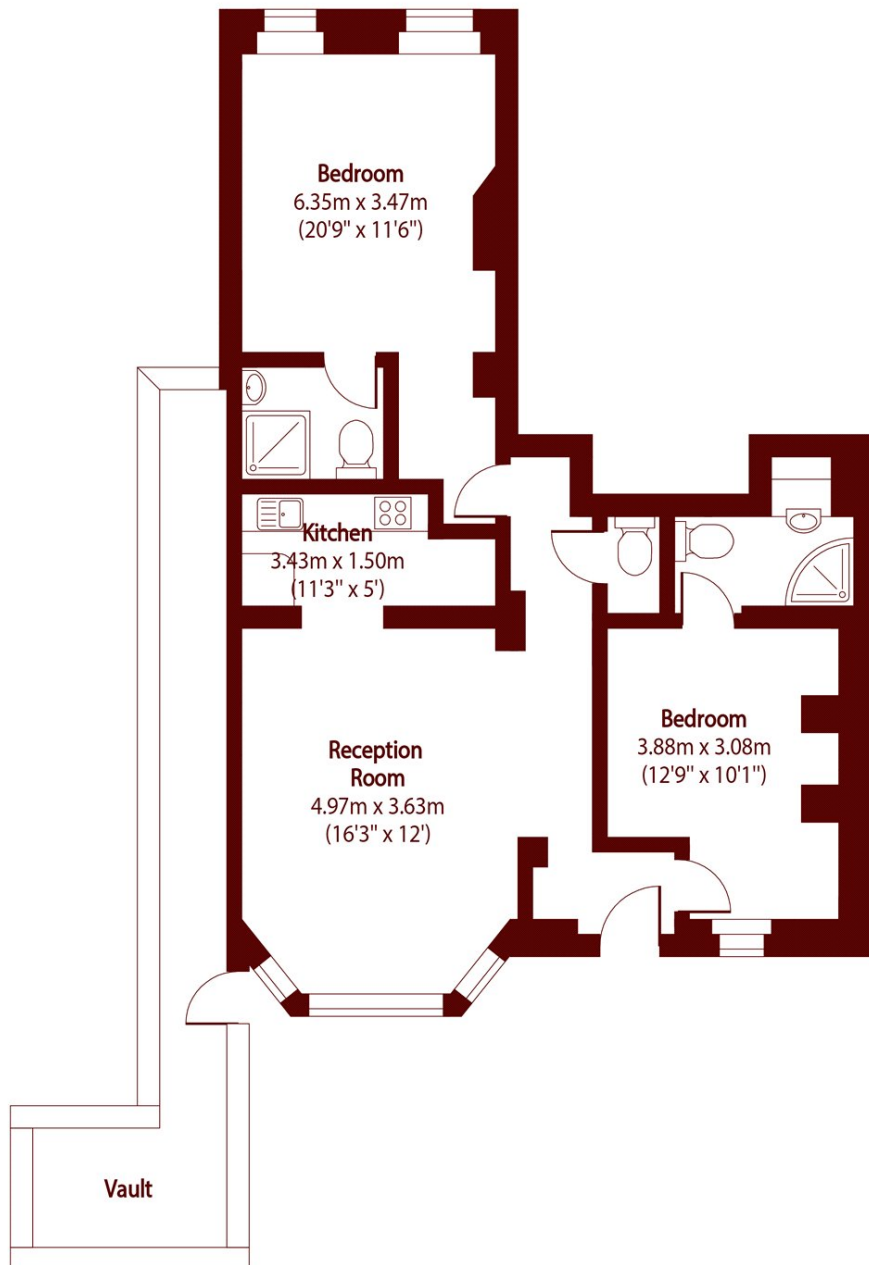
Greencroft Gardens is a popular residential street located close to the shops, restaurants and cinema complex at Swiss Cottage. Finchley Road Underground and Swiss Cottage are both just a short walk away and provide easy and direct access to the City and Central London. South Hampstead Overground is also within easy reach.







STEP INSIDE RUTLAND HOUSE



Total area (approx): 69.82 sq m (752 sq. ft)
(Excluding Vault)

Vault total area (approx): 13.07 sq m (141 sq. ft)

Queen's Park
020 7871 5050

Energy Rating: C We aim to make our particulars both accurate and reliable. However, they are not guaranteed; nor do they form part of an offer or contract. If you require clarification on any points then please contact us, especially if you're traveling some distance to view. Please note that appliances and heating systems have not been tested and therefore no warranties can be given as to their good working order

MARSH &
PARSONS