



SHOOT UP HILL, NW2

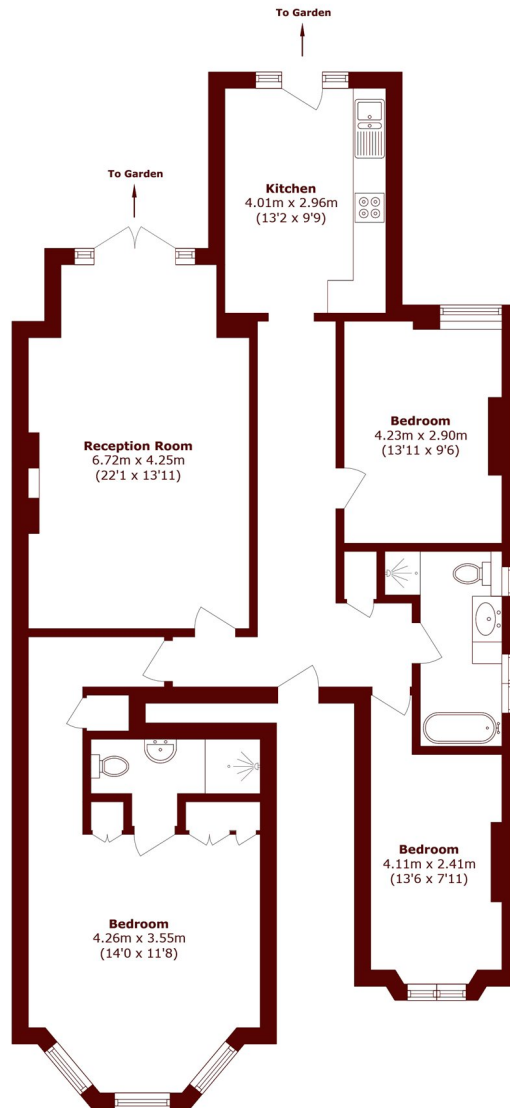
£850,000

This newly refurbished three double bedroom ground floor garden flat is located close to the Mapesbury estate. Comprising of three double bedrooms, bathroom, shower room, spacious living room, eat in fitted

Three bedrooms
Two bathrooms
Excellent condition

Newly renovated
Private garden
Mapesbury estate

STEP INSIDE SHOOT UP HILL



Total area (approx.): 114.3 sq. m (1230.3 sq. ft)

Willesden Green
020 8451 0420

Energy Rating: We aim to make our particulars both accurate and reliable. However, they are not guaranteed; nor do they form part of an offer or contract. If you require clarification on any points then please contact us, especially if you're traveling some distance to view. Please note that appliances and heating systems have not been tested and therefore no warranties can be given as to their good working order

**MARSH &
PARSONS**