



RANDOLPH GARDENS, NW6

£775,000

This lovely bright raised ground floor flat has many special features including excellent floor to ceiling height, large bay window and direct access to a spacious private garden with a pretty summer house (which

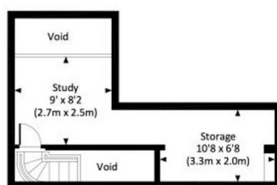
Two Double Bedrooms
Raised Ground Floor

Spacious Private Garden
Close to Maida Vale station

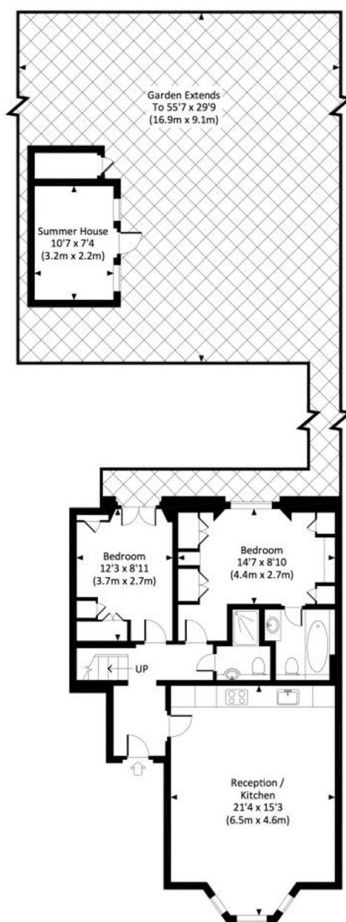
STEP INSIDE RANDOLPH GARDENS

RANDOLPH GARDENS, W9

Approx. gross internal area
722.8 Sq.Ft. / 67.2 Sq.M. Mezzanine level not included
818.4 Sq.Ft. / 76.0 Sq.M. Inc. Summer House



MEZZANINE



RAISED GROUND FLOOR



All measurements are approximate and for illustration purposes only as defined by the RICS Code of Measuring Practice © 2014 Dowling Jones Design www.dowlingjones.com 020 7610 9933

Little Venice
020 7993 3050

Energy Rating: We aim to make our particulars both accurate and reliable. However, they are not guaranteed; nor do they form part of an offer or contract. If you require clarification on any points then please contact us, especially if you're traveling some distance to view. Please note that appliances and heating systems have not been tested and therefore no warranties can be given as to their good working order

MARSH &
PARSONS