



## MITCHAM LANE, SW16

£4,400 per month

Four Bedrooms  
Four Bathrooms  
Private Garden  
Private Parking  
Wandsworth Council  
EPC - C

@marshandparsons  
marshandparsons.co.uk

MARSH &  
PARSONS



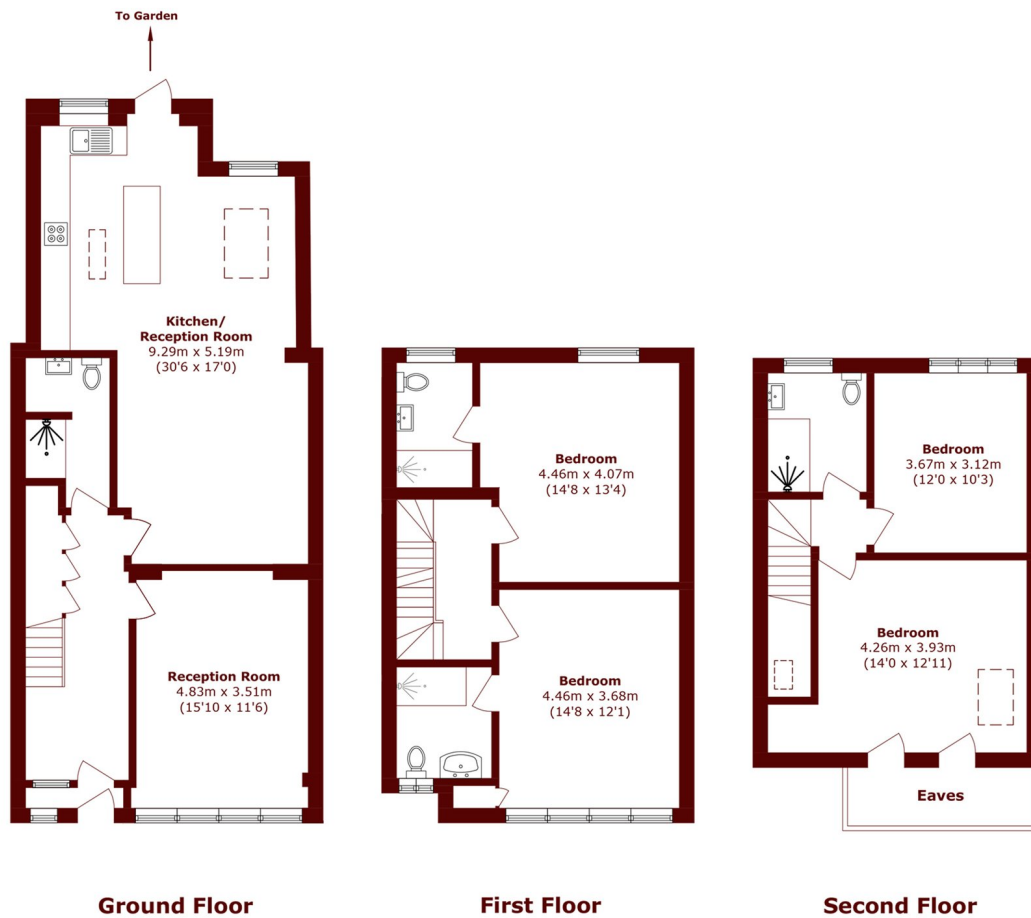
# ABOUT THE PROPERTY

A beautiful four-bedroom, four-bathroom home in immaculate condition a perfect house for both families and professionals. With off street parking, private garden and multiple transport links within walking distance it is a one to see.

Mitcham Lane is a residential road in the sought after Furzedown area, just a short walk from the cafés and shops of the popular Moyser road and very good locals schools such as Penwortham Primary and Graveney School. The green open spaces of both Tooting Bec Common and Streatham Common are also within easy walking distance. Frequent trains run from Tooting overground station into Blackfriars, Farringdon and St.



# STEP INSIDE MITCHAM LANE



Total area (approx.): 169.1 sq. m (1820.1 sq. ft)  
(Excluding Eaves)

**Tooting**  
020 8772 9210

Energy Rating: We aim to make our particulars both accurate and reliable. However, they are not guaranteed; nor do they form part of an offer or contract. If you require clarification on any points then please contact us, especially if you're traveling some distance to view. Please note that appliances and heating systems have not been tested and therefore no warranties can be given as to their good working order

**MARSH &  
PARSONS**