



QUEENSMILL ROAD, SW6

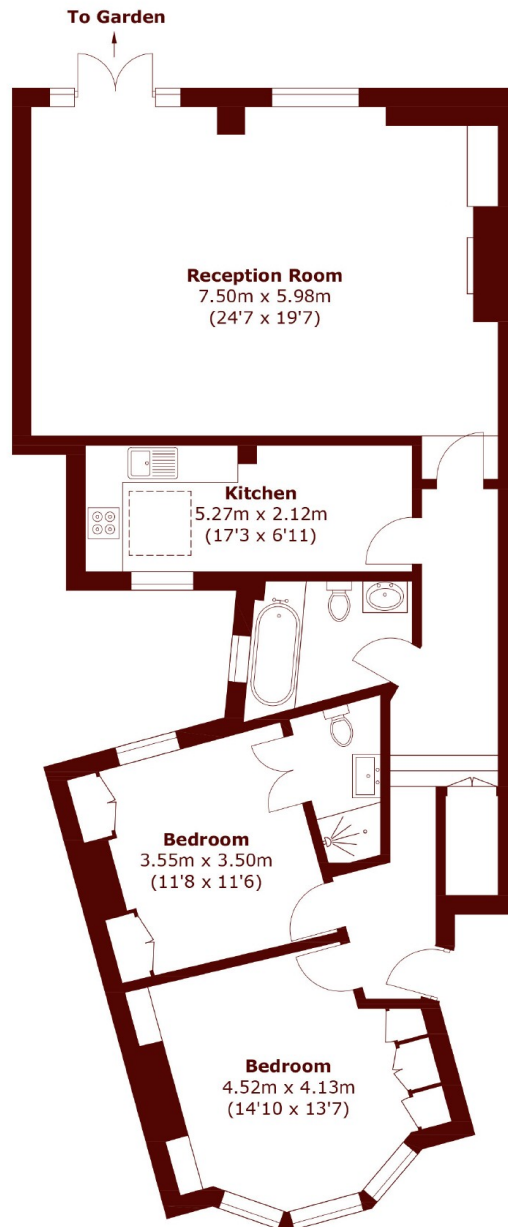
£3,500 per week

This beautifully refurbished two bedroom garden flat offers generous living space and a substantial private garden to the rear. The accommodation includes a spacious reception room with ample space for

Two double bedrooms
Two bathrooms

Large private garden
Great entertaining spaces

STEP INSIDE QUEENSMILL ROAD



Total area (approx.): 103.4 sq. m (1,112.9 sq. ft)

Bishops Park
020 7368 2480

Energy Rating: We aim to make our particulars both accurate and reliable. However, they are not guaranteed; nor do they form part of an offer or contract. If you require clarification on any points then please contact us, especially if you're traveling some distance to view. Please note that appliances and heating systems have not been tested and therefore no warranties can be given as to their good working order

**MARSH &
PARSONS**