



## HALDANE ROAD, SW6

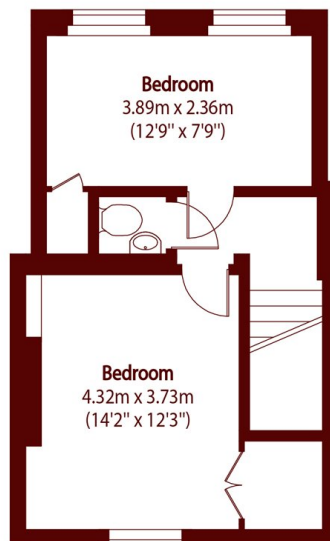
£1,100,000

A beautifully presented three bedroom home offering exceptional space, natural light, and a superb garden, ideally positioned in the heart of Fulham.

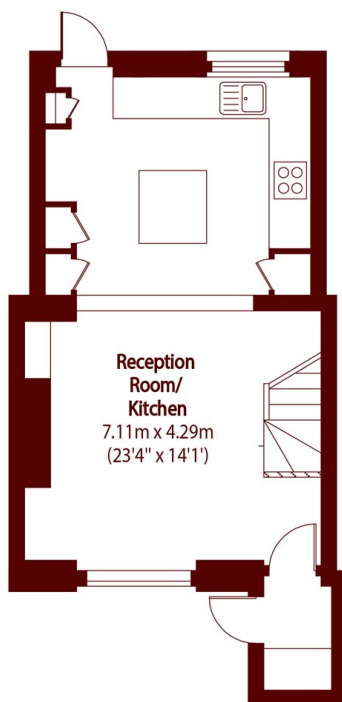
Freehold house  
Three bedrooms  
Excellent condition

Large private garden  
Generous reception space  
Energy rating: c

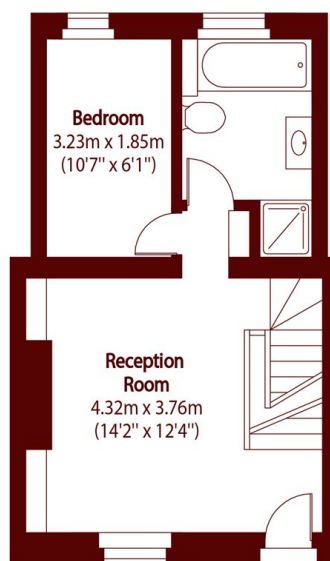
# STEP INSIDE HALDANE ROAD



First Floor



Lower Ground Floor



Raised Ground Floor

Total area (approx): 91.14 sq m (981 sq. ft)

Fulham  
020 7736 9822

Energy Rating: C We aim to make our particulars both accurate and reliable. However, they are not guaranteed; nor do they form part of an offer or contract. If you require clarification on any points then please contact us, especially if you're traveling some distance to view. Please note that appliances and heating systems have not been tested and therefore no warranties can be given as to their good working order

MARSH &  
PARSONS