



HENRY WISE HOUSE, SW1V

£519 per week

Heating & hot water inc
One double bedroom
Upper floor with lift
Private patio
Communal gardens
Energy rating: c

@marshandparsons
marshandparsons.co.uk

MARSH &
PARSONS



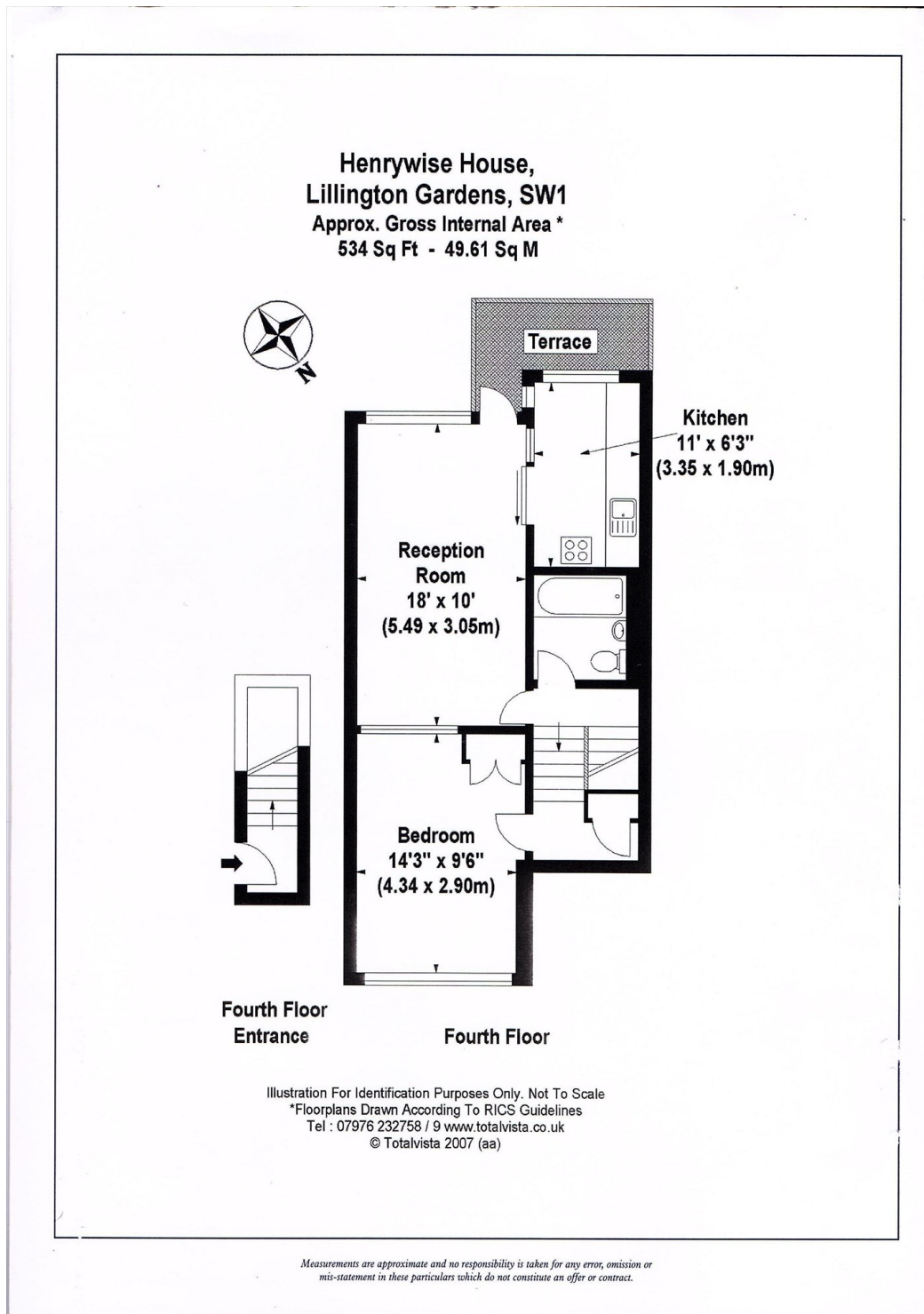
ABOUT THE PROPERTY

This beautiful apartment is bright throughout, comprises a large living room with dining area, a private patio overlooking communal gardens, a separate kitchen with integrated appliances and spacious bedroom - Heating & hot water included

The property is conveniently located moments from Victoria Station (Victoria line, District line, Circle line & National Rail) as well as being within close proximity to the fashionable restaurants, boutique shops and bakeries on Churton Street & Cambridge Street.



STEP INSIDE HENRY WISE HOUSE



Pimlico & Westminster
020 7828 8100

Energy Rating: C We aim to make our particulars both accurate and reliable. However, they are not guaranteed; nor do they form part of an offer or contract. If you require clarification on any points then please contact us, especially if you're traveling some distance to view. Please note that appliances and heating systems have not been tested and therefore no warranties can be given as to their good working order

**MARSH &
PARSONS**