



CHIPPENHAM MEWS, W9

£1,450,000

Mews House
Two Bedrooms
Two Reception rooms
Two En-suites
Excellent Condition
Private Garage

@marshandparsons
marshandparsons.co.uk

MARSH &
PARSONS

ABOUT THE PROPERTY

Beautifully restored and extensively modernised, this exceptional two bedroom mews house spans approximately 1,518sq ft across three floors, offering bright, contemporary living with the rare benefit of a private garage. The stunning first floor reception room enjoys a sunny southerly aspect and features three French doors opening to Juliette balconies, while the ground floor provides a sleek integrated kitchen, cloakroom and welcoming entrance hall/dining area. On the top floor, two generous bedrooms are complemented by two beautifully appointed bathrooms, including a superb principal en-suite with excellent storage.

Chippenham Mews is ideally located for the shops, bars



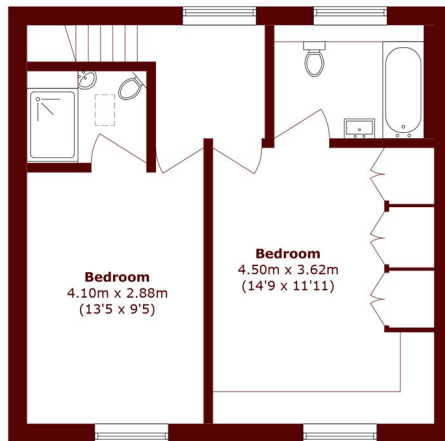




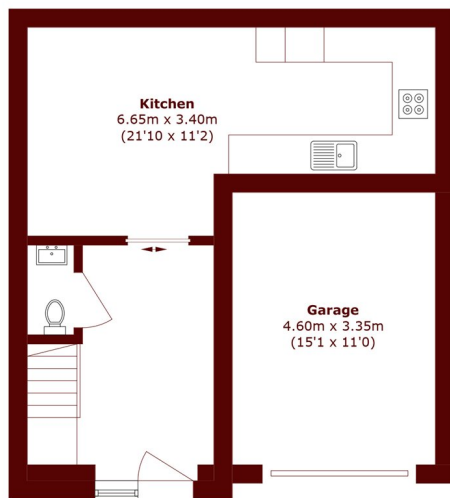
FURTHER DETAILS



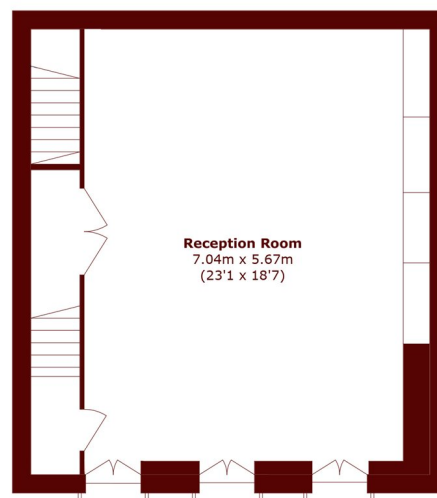
STEP INSIDE CHIPPENHAM MEWS



Second Floor



Ground Floor



First Floor

Total area (approx.): 121.4 sq. m (1306.7 sq. ft)
(Excluding Garage)

Garage area (approx.): 14.9 sq. m (160.3 sq. ft)

Little Venice
020 7993 3050

Energy Rating: We aim to make our particulars both accurate and reliable. However, they are not guaranteed; nor do they form part of an offer or contract. If you require clarification on any points then please contact us, especially if you're traveling some distance to view. Please note that appliances and heating systems have not been tested and therefore no warranties can be given as to their good working order

**MARSH &
PARSONS**