



PRIOR STREET, SE10

£395,000

First floor apartment
Two double bedrooms
Private balcony
Extended lease
Located in West Greenwich
Energy rating: c

@marshandparsons
marshandparsons.co.uk

MARSH &
PARSONS



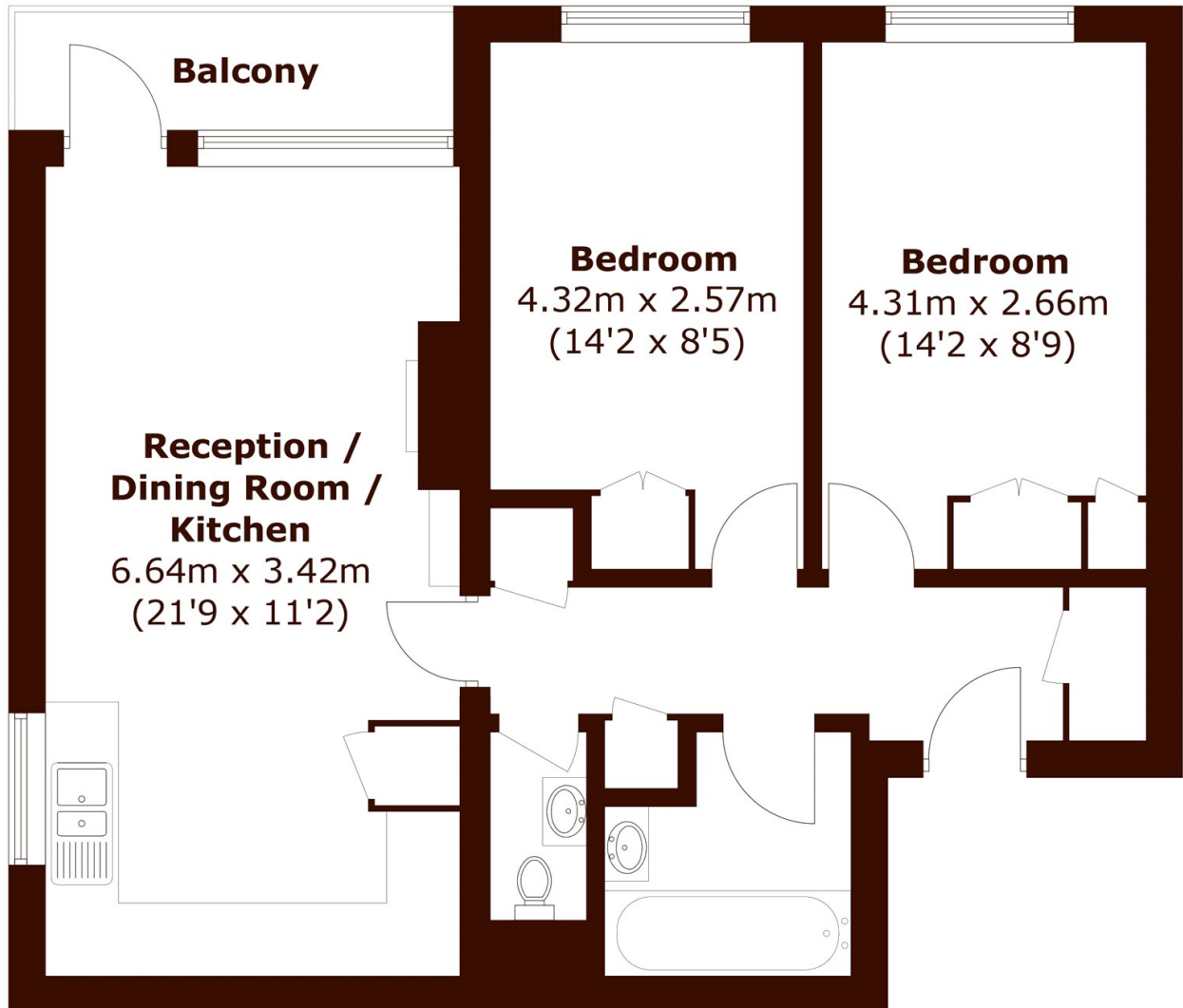
ABOUT THE PROPERTY

A bright and airy first floor apartment, situated in a sought after location of West Greenwich, overlooking quiet gardens and a view of Canary Wharf. Being sold chain free and features an extended lease. The interior is modern, features ample storage space and a private balcony. Comprises two double bedrooms, both benefitting from tall fitted wardrobes, a modern bathroom suite, an open plan kitchen and spacious lounge/diner.

Greenwich mainline and DLR stations are a short walk away. The town centre is within easy reach where you can find Greenwich's royal park, the covered market and Greenwich pier, for the river taxi.



STEP INSIDE PRIOR STREET



Total area (approx.): 61.0 sq. m (656.6 sq. ft)
Balcony: 3.5 sq. m (37.7 sq. ft)

Greenwich
020 8312 8312

Energy Rating: C We aim to make our particulars both accurate and reliable. However, they are not guaranteed; nor do they form part of an offer or contract. If you require clarification on any points then please contact us, especially if you're traveling some distance to view. Please note that appliances and heating systems have not been tested and therefore no warranties can be given as to their good working order

MARSH &
PARSONS