



## CHARTERIS ROAD, NW6

£2,750 per month

Two Bedrooms  
Ground Floor  
Open Plan Reception  
Private Garden  
Wooden Floors  
Close to Transport

@marshandparsons  
marshandparsons.co.uk

MARSH &  
PARSONS



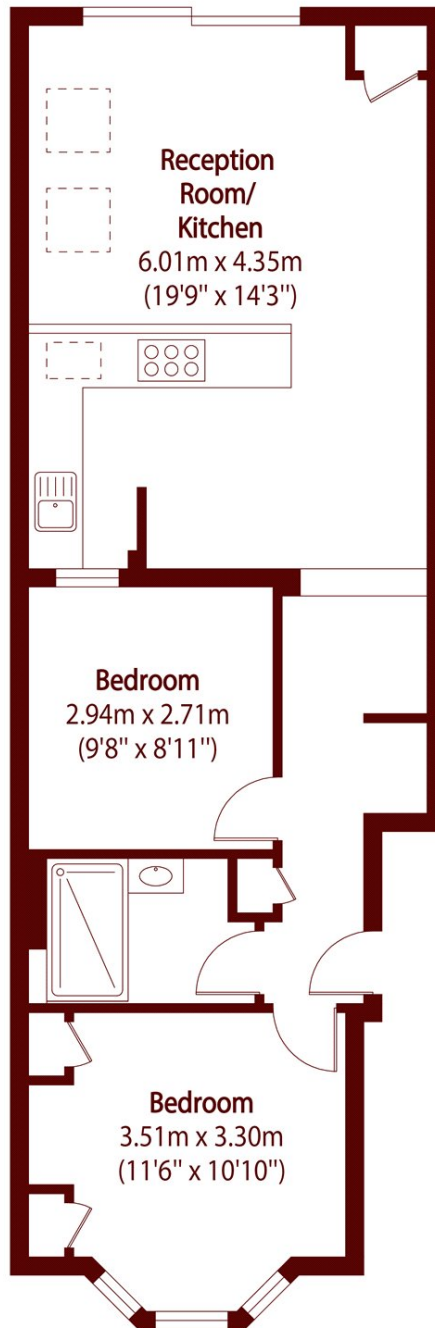
# ABOUT THE PROPERTY

A beautifully presented two bedroom ground floor apartment. Layout includes an open plan reception leading to a private and well maintained garden, a modern bathroom with a walk in shower and wooden floors.

Charteris Road is moments from the green open spaces of Queen's Park and the many shops, cafés and bars of Salisbury Road. Local transport links include Queen's Park and Kilburn High Road.



# STEP INSIDE CHARTERIS ROAD



Total area (approx): 56.81 sq m (611 sq. ft)

**Queen's Park**  
020 7871 5050

Energy Rating: D We aim to make our particulars both accurate and reliable. However, they are not guaranteed; nor do they form part of an offer or contract. If you require clarification on any points then please contact us, especially if you're traveling some distance to view. Please note that appliances and heating systems have not been tested and therefore no warranties can be given as to their good working order

**MARSH &  
PARSONS**