



WIMBLEDON PARK ROAD, SW19

£4,900 per month

Four bedrooms
Two bathrooms
Roof terrace and two balconies
Stunning views
Lift access
Energy rating: c

@marshandparsons
marshandparsons.co.uk

MARSH &
PARSONS



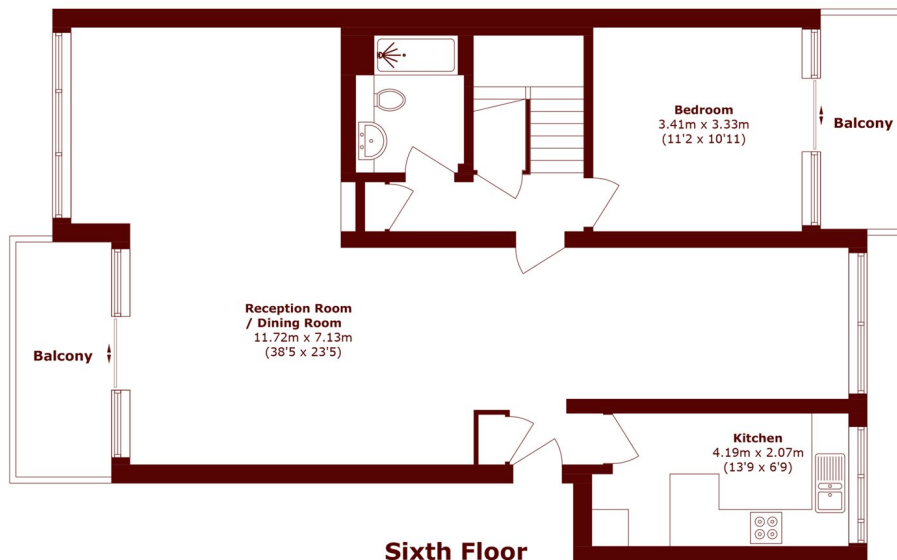
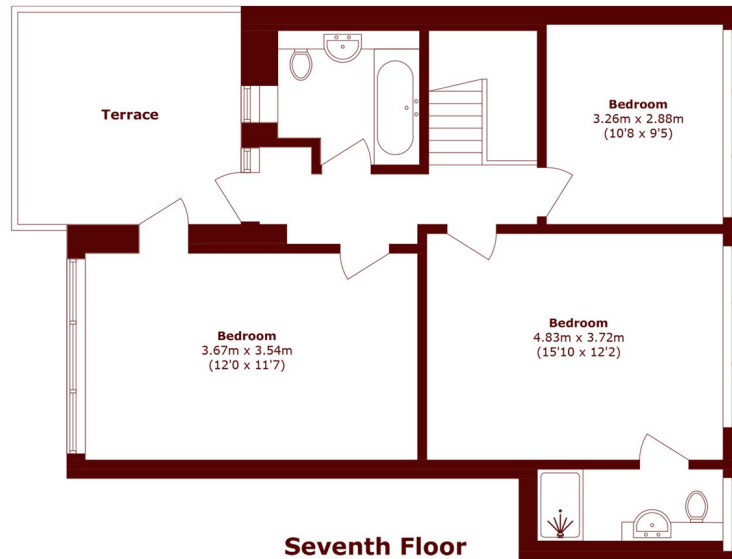
ABOUT THE PROPERTY

A newly refurbished four double bedroom split level penthouse apartment with views over Wimbledon Park. Comprising a huge double reception room, separate kitchen, four double bedrooms, two bathrooms, further WC, roof terrace, two balconies and a garage.

Located within moments of Wimbledon Park, Wimbledon Lawn Tennis Club and a few minutes away from Southfields Tube Station.



STEP INSIDE WIMBLEDON PARK ROAD



Total area (approx.): 157.2 sq. m (1692.1 sq. ft)

Balcony area (approx.): 10.7 sq. m (115.1 sq. ft)

Terrace area (approx.): 12.0 sq. m (129.1 sq. ft)

Wimbledon
020 8879 6661

Energy Rating: C We aim to make our particulars both accurate and reliable. However, they are not guaranteed; nor do they form part of an offer or contract. If you require clarification on any points then please contact us, especially if you're traveling some distance to view. Please note that appliances and heating systems have not been tested and therefore no warranties can be given as to their good working order

**MARSH &
PARSONS**