



## WYNDHAM ROAD, SE5

£350,000

Two double bedrooms  
Balcony  
Lots of light  
Close to Kennington Park  
Close to Oval station  
Generous proportions



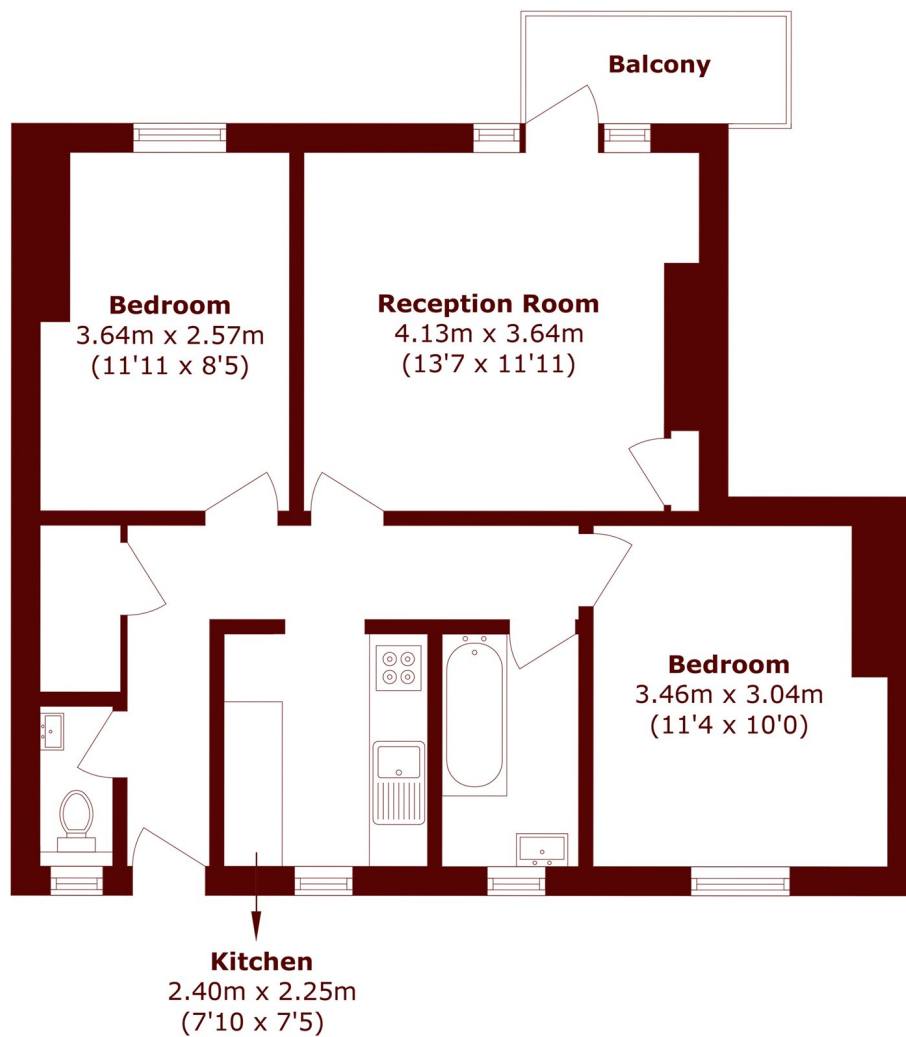
# ABOUT THE PROPERTY

A spacious two double bedroom apartment moments from Kennington Park, offering generous proportions and excellent natural light throughout. The property features a bright reception room with access to a private balcony, and a modern separate kitchen with ample storage. Further benefits include a bathroom with shower over bath, separate WC, communal gardens, and a quiet residential setting.

Ideally located within a short walk of Oval and Kennington underground stations, with easy access to Elephant & Castle, Walworth Road, local amenities, parks, green spaces, and superb transport links into The West End.



# STEP INSIDE WYNDHAM ROAD



Total area (approx.): 56.9 sq. m (644.7 sq. ft)

Balcony area (approx.): 2.9 sq. m (31.2 sq. ft)

**Kennington**  
020 7587 1533

Energy Rating: C We aim to make our particulars both accurate and reliable. However, they are not guaranteed; nor do they form part of an offer or contract. If you require clarification on any points then please contact us, especially if you're traveling some distance to view. Please note that appliances and heating systems have not been tested and therefore no warranties can be given as to their good working order

**MARSH &  
PARSONS**