



HERBERT ROAD, SW19

£4,950 per month

Four bedrooms
Three bathrooms
Large garden
Two reception rooms
Eat in kitchen
Energy rating: c

@marshandparsons
marshandparsons.co.uk

MARSH &
PARSONS



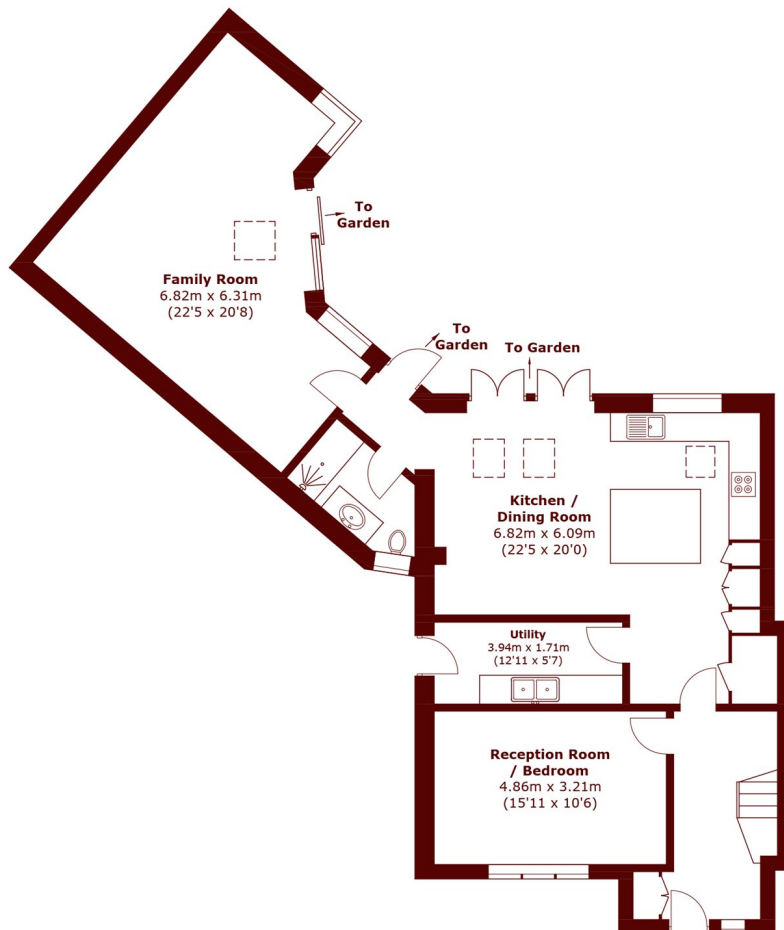
ABOUT THE PROPERTY

A four double bedroom, three bathroom house with great downstairs living space and a large private garden available to rent in the heart of Wimbledon.

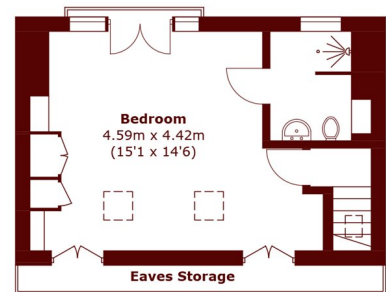
The property is located under half a mile from Wimbledon mainline station and within easy reach to local shops, restaurants and bars in Wimbledon Town.



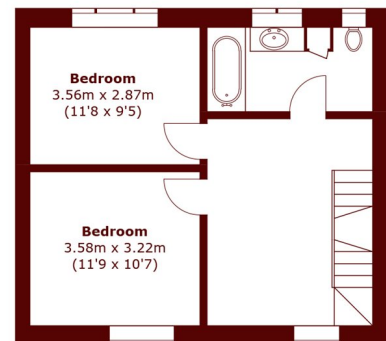
STEP INSIDE HERBERT ROAD



Ground Floor



Second Floor



First Floor

Total area (approx.): 189.0 sq. m (2,034.3 sq. ft)
(Excluding Eaves Storage)

Wimbledon
020 8879 6661

Energy Rating: C We aim to make our particulars both accurate and reliable. However, they are not guaranteed; nor do they form part of an offer or contract. If you require clarification on any points then please contact us, especially if you're traveling some distance to view. Please note that appliances and heating systems have not been tested and therefore no warranties can be given as to their good working order

**MARSH &
PARSONS**