



## BARDSLEY LANE, SE10

£375,000

Modern apartment  
One bedroom  
Open plan kitchen/diner  
Private terrace  
Close to Cutty Sark  
Energy rating: b

@marshandparsons  
marshandparsons.co.uk

MARSH &  
PARSONS



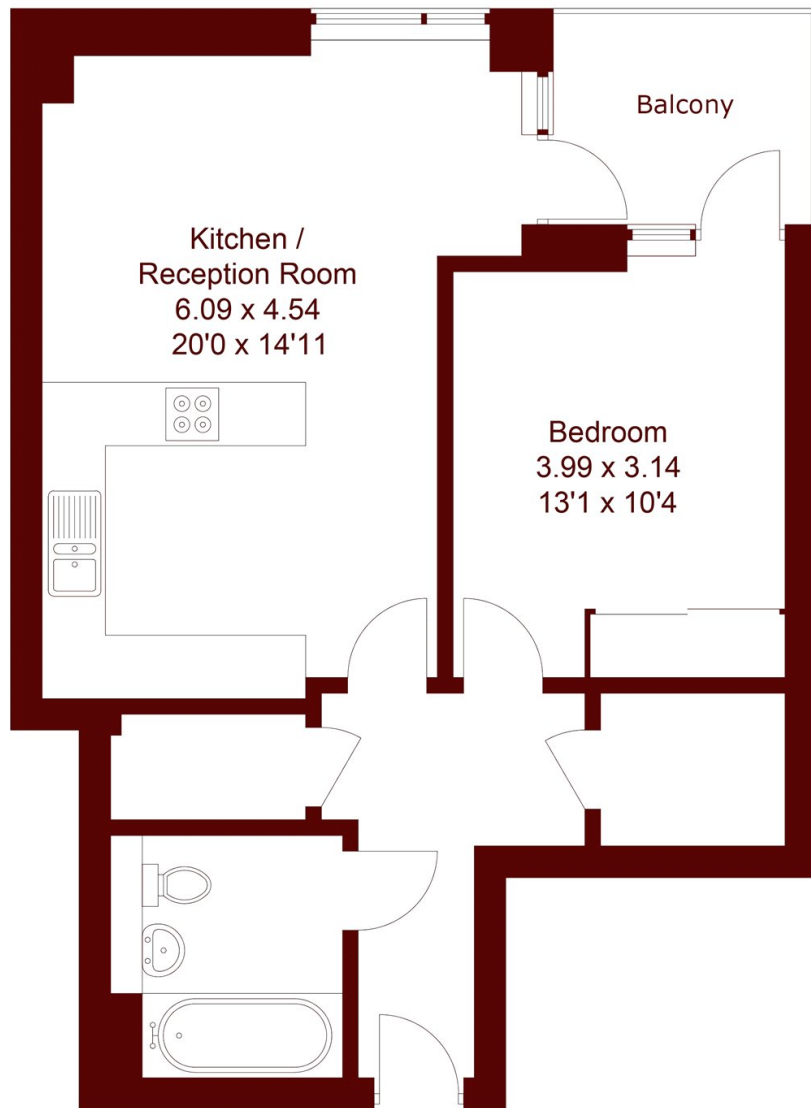
# ABOUT THE PROPERTY

Situated in the heart of Greenwich town centre comes this bright and spacious, third floor modern apartment just moments from the Cutty Sark attraction. This property has large windows offering plenty of natural light and comprises an open plan kitchen/diner, spacious living room, a double bedroom and bathroom suite with fitted shower over bath. A huge stand out feature is the private terrace, which is mostly enclosed giving you that sense of privacy and ample storage within the apartment.

Greenwich mainline and DLR stations are a very short walk away, as well as Greenwich park and some beautiful riverside pubs. EWS1 compliant, with a B1 rating.



# STEP INSIDE BARDSLEY LANE



Approximate Gross Internal Area  
55.3 sq m / 595 sq ft

Greenwich  
020 8312 8312

Energy Rating: B We aim to make our particulars both accurate and reliable. However, they are not guaranteed; nor do they form part of an offer or contract. If you require clarification on any points then please contact us, especially if you're traveling some distance to view. Please note that appliances and heating systems have not been tested and therefore no warranties can be given as to their good working order

MARSH &  
PARSONS