



## BURNTHWAITE ROAD, SW6

£850,000

The property is in excellent condition providing stylish and bright living space throughout, finished to the highest quality with a bespoke hand-crafted kitchen, underfloor heating in the living space and bathrooms.

Roof terrace

Two double bedrooms

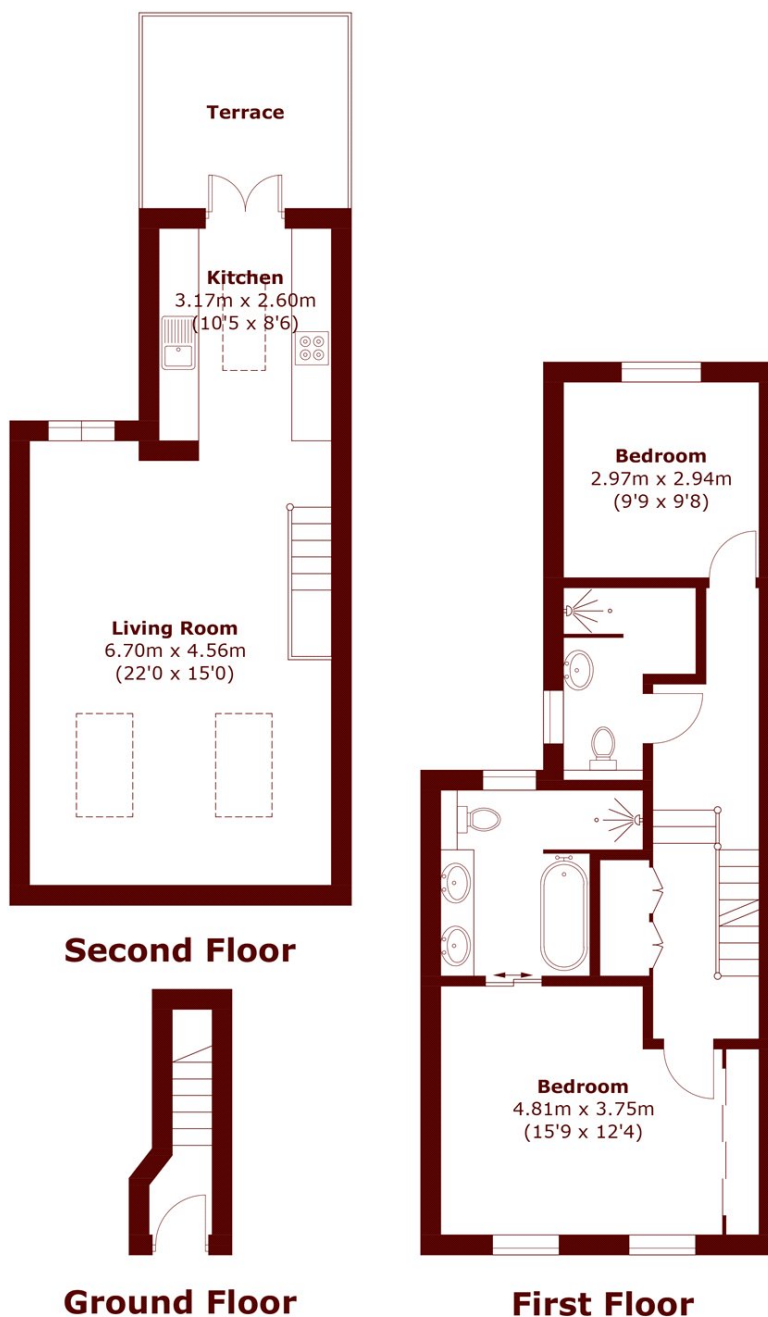
Split-level

Prime location

Excellent amenities

Energy rating: c

# STEP INSIDE BURNTHWAITE ROAD



Total area (approx.): 93.0sq. m (1001 sq. ft)  
Terrace (approx.): 9.0 sq. m (96.9 sq. ft)

Fulham  
020 7736 9822

Energy Rating: C We aim to make our particulars both accurate and reliable. However, they are not guaranteed; nor do they form part of an offer or contract. If you require clarification on any points then please contact us, especially if you're traveling some distance to view. Please note that appliances and heating systems have not been tested and therefore no warranties can be given as to their good working order

MARSH &  
PARSONS