



GLENGALL ROAD, NW6

£2,750 per week (per month)

Two Bedrooms
Private Garden
Modern
Period Features
Wooden Floors
Spacious

@marshandparsons
marshandparsons.co.uk

MARSH &
PARSONS



ABOUT THE PROPERTY

A modern two bedroom apartment with a private garden that has been recently refurbished. The property has high ceilings and period features including original wooden flooring throughout.

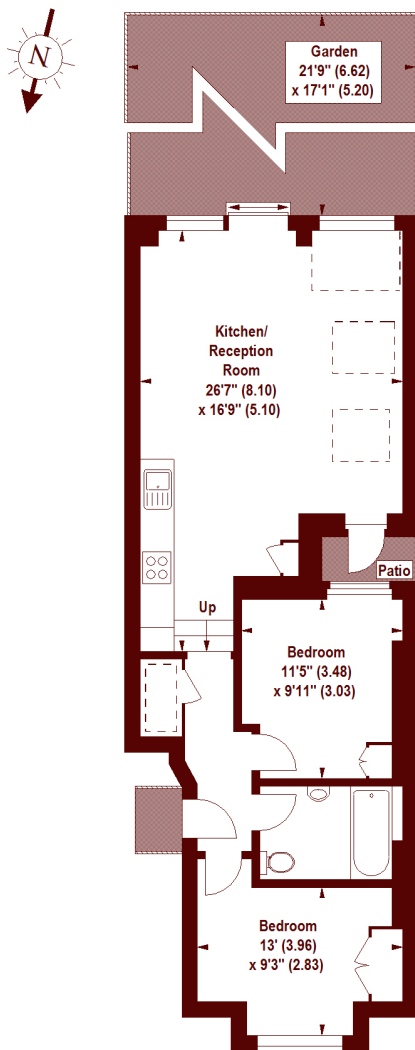
Glengall Road is ideally located for the cafes, restaurants and amenities of Salusbury Road & Lonsdale Road. Local transport links include Queen's Park and Brondesbury Park.



STEP INSIDE GLENGALL ROAD

Glengall Road, NW6

APPROX. GROSS INTERNAL FLOOR AREA 728 SQFT / 67.63 SQM



GROUND FLOOR

The floor plan is not to scale and measurements and areas shown are approximate and therefore should be used for illustrative purposes only. The plan has been prepared in accordance with the RICS code of Measuring Practice and whilst we have confidence in the information produced, it must not be relied on. If there is any aspect of particular importance, you should carry out or commission your own inspection of the property.
Copyright of FeaturePRO.

Queen's Park
020 7871 5050

Energy Rating: We aim to make our particulars both accurate and reliable. However, they are not guaranteed; nor do they form part of an offer or contract. If you require clarification on any points then please contact us, especially if you're traveling some distance to view. Please note that appliances and heating systems have not been tested and therefore no warranties can be given as to their good working order

MARSH &
PARSONS