



MAPLE CLOSE, SW4

£850,000 per week

3 Bedrooms
Chain Free
Private Gated Road
Sought after location
Close to Clapham Common
EPC rating D

@marshandparsons
marshandparsons.co.uk

MARSH &
PARSONS

ABOUT THE PROPERTY

A three bedroom semi-detached house in the popular area of Clapham. This freehold property offers fantastic living accommodation to any large family; and boasts; 3 spacious bedrooms (one en-suite), entrance hallway, spacious lounge, kitchen, bathroom, W.C. And garage. To the rear of the property there is a lovely yard with lots of opportunity. The property is surrounded by supermarkets, schools and pub/eateries.

Maple Close Is a quiet gated close on the edge of the Abbeville. Ideally positioned moments from the open spaces of Clapham Common, the property is conveniently



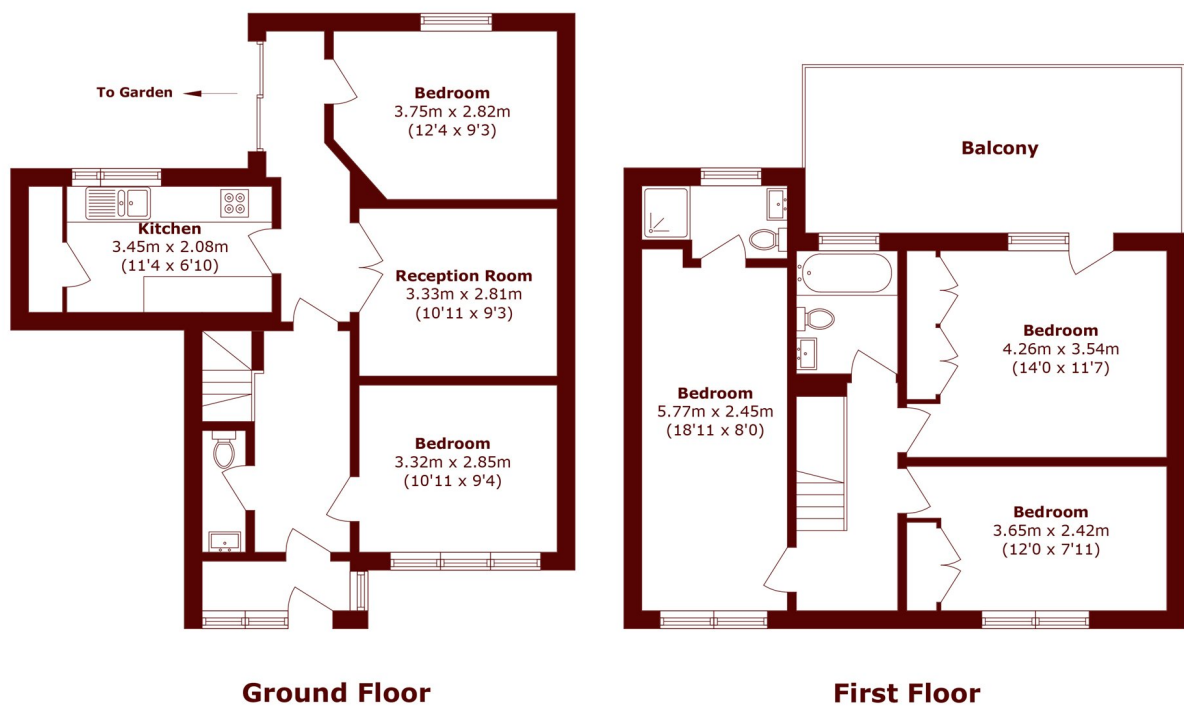




FURTHER DETAILS



STEP INSIDE MAPLE CLOSE



Total area (approx.): 113.4 sq. m (1220.6 sq. ft)
Balcony area (approx.): 14.2 sq. m (152.8 sq. ft)

Clapham
020 8102 0124

Energy Rating: We aim to make our particulars both accurate and reliable. However, they are not guaranteed; nor do they form part of an offer or contract. If you require clarification on any points then please contact us, especially if you're traveling some distance to view. Please note that appliances and heating systems have not been tested and therefore no warranties can be given as to their good working order

MARSH &
PARSONS