



## MOORE PARK ROAD, SW6

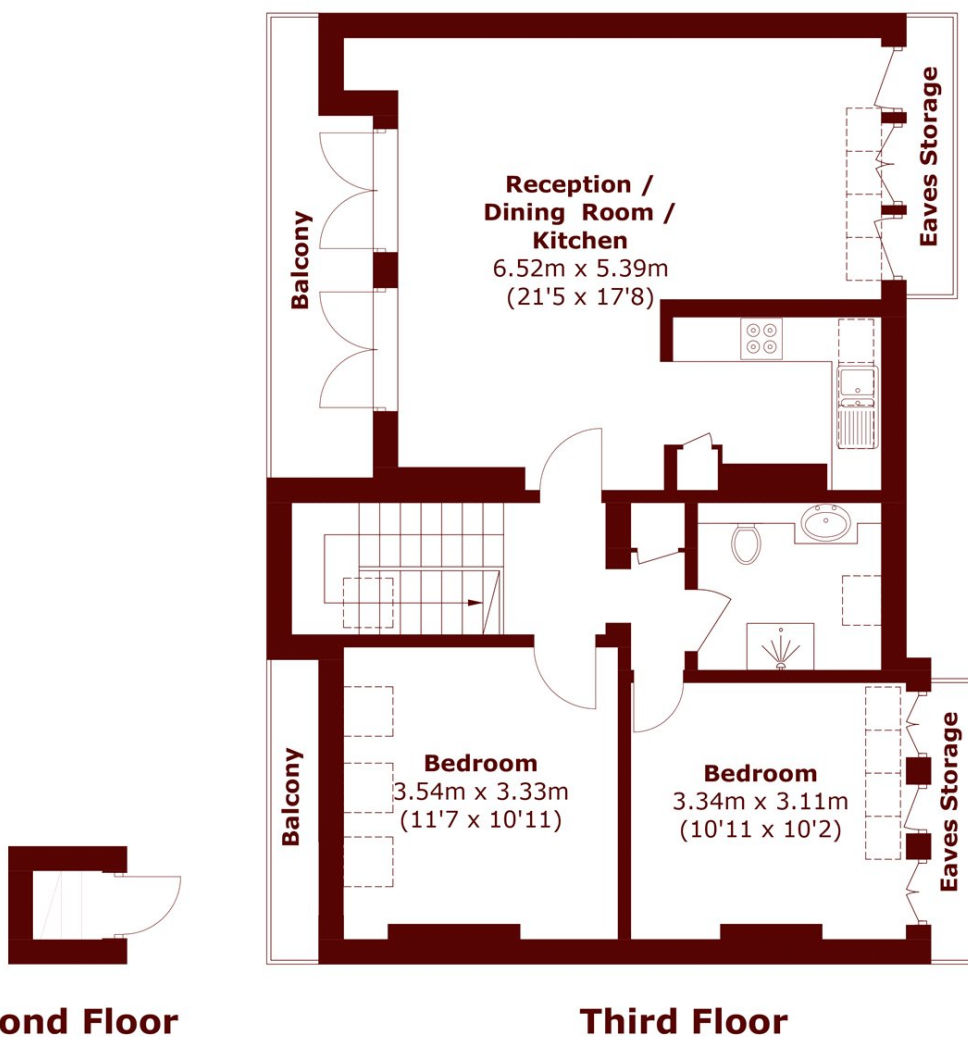
£675,000

A beautiful flat flooded with light in a period conversion enviably positioned on the Moore Park Estate.

Two double bedrooms  
Two modern bathrooms  
Stunning roof terrace

Recently refurbished  
Excellent amenities  
Energy rating: c

# STEP INSIDE MOORE PARK ROAD



Total area (approx.): 71.9 sq. m (773.9 sq. ft)  
Balconies area: 8.2 sq. m (88.2 sq. ft)

**Fulham**  
020 7736 9822

Energy Rating: C We aim to make our particulars both accurate and reliable. However, they are not guaranteed; nor do they form part of an offer or contract. If you require clarification on any points then please contact us, especially if you're traveling some distance to view. Please note that appliances and heating systems have not been tested and therefore no warranties can be given as to their good working order

**MARSH &  
PARSONS**