



STANHOPE TERRACE, W2

£999,950

Two bedroom
Two bathroom
Share of freehold
Secure development
Meticulously finished
Prime location

@marshandparsons
marshandparsons.co.uk

MARSH &
PARSONS



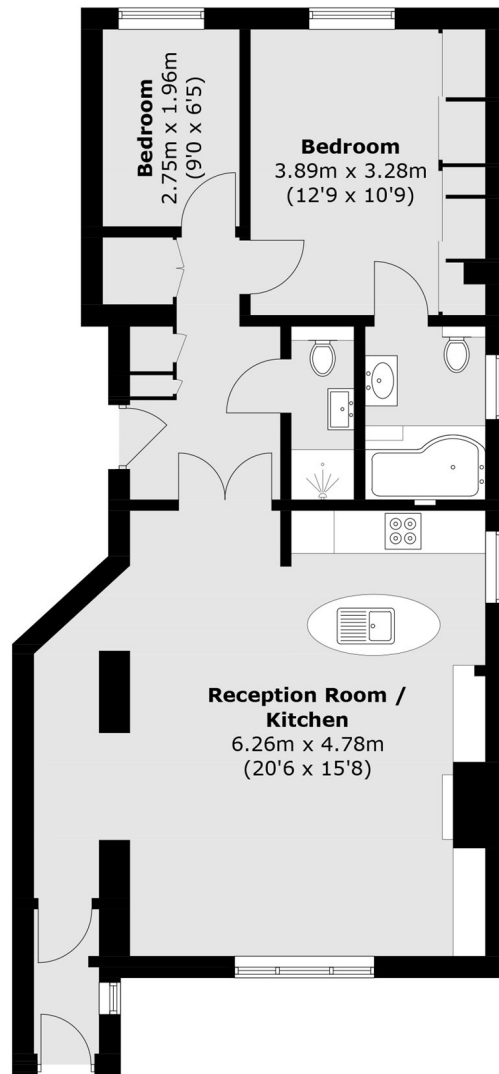
ABOUT THE PROPERTY

A beautifully finished two bedroom, two bathroom apartment set within a secure gated development. Featuring a spacious open-plan kitchen, dining and living area, the property includes a principal bedroom with en-suite, a second double bedroom, and access to two private gardens. Ideally located, this exceptional home combines contemporary living with a rare sense of tranquillity.

Stanhope Terrace is ideally located moments away from a wealth of fashionable shops, artisan cafés and restaurants on Connaught Street. Unrivalled transport links can be found a stone's throw away at Lancaster Gate (Central Line). The green open spaces of Hyde Park are also moments away.



STEP INSIDE STANHOPE TERRACE



Ground Floor

Total area (approx.): 73.6 sq. m (792.2 sq. ft)

Marylebone & Mayfair
020 7935 1775

Energy Rating: D We aim to make our particulars both accurate and reliable. However, they are not guaranteed; nor do they form part of an offer or contract. If you require clarification on any points then please contact us, especially if you're traveling some distance to view. Please note that appliances and heating systems have not been tested and therefore no warranties can be given as to their good working order

MARSH &
PARSONS