



EASTLAKE ROAD, SE5

£1,250,000

Five Double Bedrooms
Three Bathrooms
Large Private Garden
Period Property
Chain Free
Energy Rating: D

@marshandparsons
marshandparsons.co.uk

MARSH &
PARSONS

ABOUT THE PROPERTY

An impressive and handsome freehold home arranged over four storeys and spanning over 2200 sqft boasting an incredible open-plan kitchen/reception room, five double bedrooms, three bathrooms and a large private garden.

Eastlake Road is well positioned for the vast array of shops, cafés and restaurants of both Loughborough Junction and central Brixton with the boutiques of Herne Hill also on the doorstep. The green open spaces of Brockwell & Myatts Field are also a short walk away with the excellent transport links of Loughborough Junction and Brixton stations nearby.







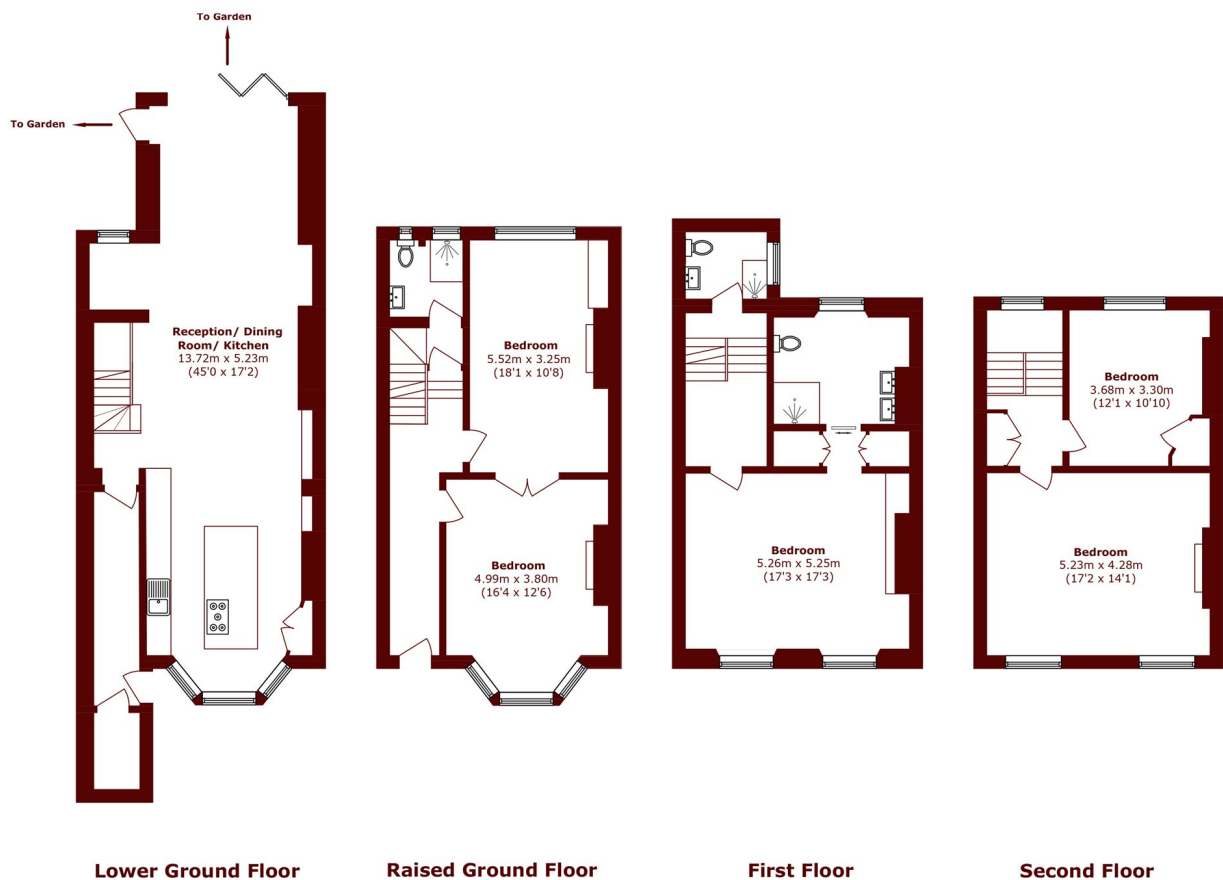
FURTHER DETAILS

A vast open-plan kitchen/reception room is located on the lower ground floor with a stylish fitted kitchen featuring solid worktops, double ovens, an American style fridge-freezer and ample space for dining and entertaining with direct access via bi-folding doors onto a generous private garden. The raised ground floor comprises two spacious bedrooms (currently used as additional reception rooms) and a bathroom.

Over the first and second floors, there are three double bedrooms and two bathrooms with the principal bedroom furnished with a built-in wardrobes and en suite.



STEP INSIDE EASTLAKE ROAD



Total Area (approx.): 207.8 sq. m (2236.7 sq. ft)

Brixton
020 7733 4595

Energy Rating: D We aim to make our particulars both accurate and reliable. However, they are not guaranteed; nor do they form part of an offer or contract. If you require clarification on any points then please contact us, especially if you're traveling some distance to view. Please note that appliances and heating systems have not been tested and therefore no warranties can be given as to their good working order

**MARSH &
PARSONS**