

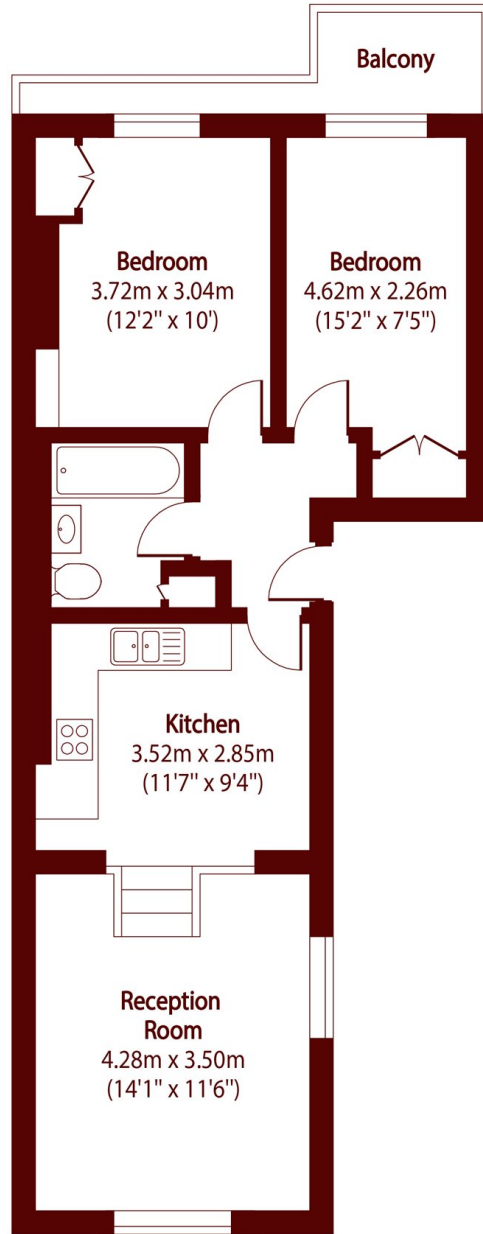


Westbourne Grove, W11

£1,050,000



- Potential Roof Terrace (STPP)
- South-Facing Balcony
- High Ceilings
- Two Double Bedrooms
- No Onward Chain
- First Floor



Total area (approx): 57.15 sq m (615 sq. ft)

Balcony total area (approx): 4.25 sq m (46 sq. ft)

Marsh & Parsons Notting Hill

2-6 Kensington Park Road,
London, W11 3BU
020 7313 2890