



## HARLINGER STREET, SE18

£250,000

Flat  
Two bedrooms  
One bathroom  
Spacious  
River views  
Energy rating: c

@marshandparsons  
marshandparsons.co.uk

MARSH &  
PARSONS



# ABOUT THE PROPERTY

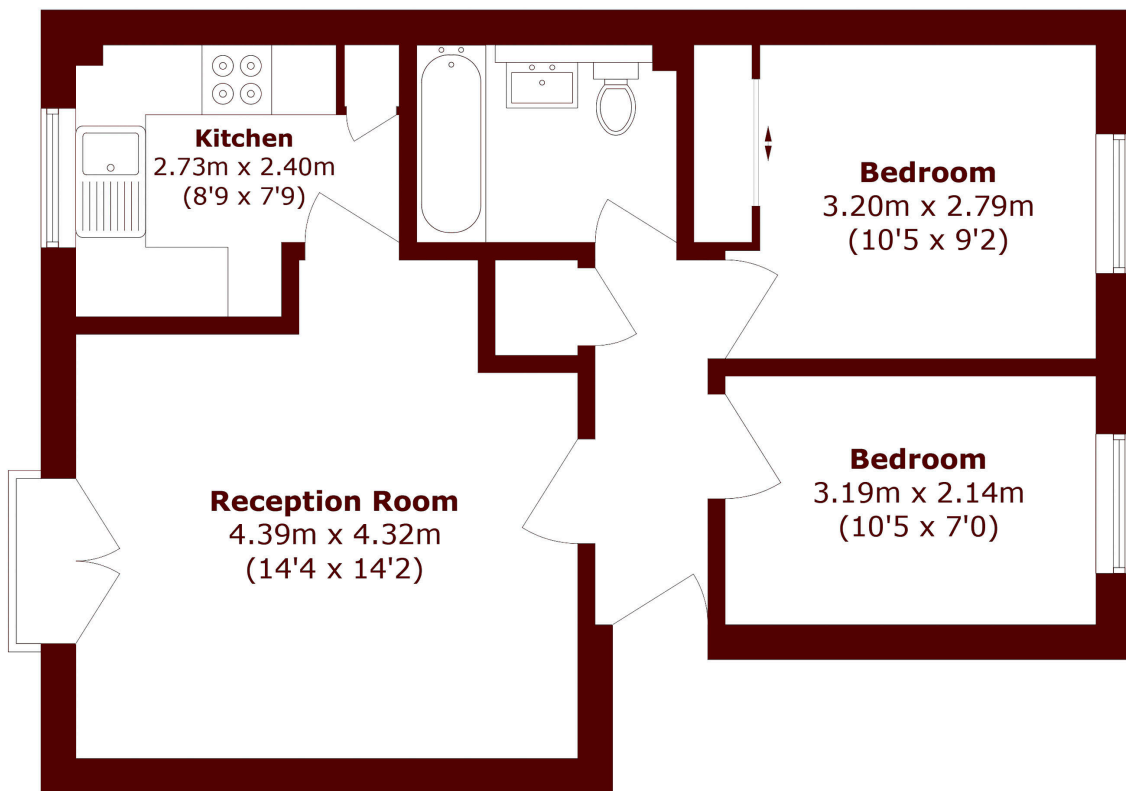
Guide Price £250,000 - £260,000.

This spacious two bedroom apartment offers stunning views over the River Thames. The property features two generous double bedrooms, a spacious bathroom, a separate kitchen, and a bright living area, offering well-balanced accommodation throughout.

Located in a peaceful residential setting, the apartment is just a short walk from and is well served by local bus routes with direct links to (Jubilee Line), historic, and town centre.



# STEP INSIDE HARLINGER STREET



Total area (approx.): 48.8 sq. m (525.3 sq. ft)

Charlton  
020 8293 0454

Energy Rating: C We aim to make our particulars both accurate and reliable. However, they are not guaranteed; nor do they form part of an offer or contract. If you require clarification on any points then please contact us, especially if you're traveling some distance to view. Please note that appliances and heating systems have not been tested and therefore no warranties can be given as to their good working order

MARSH &  
PARSONS