



ASHCOMBE STREET, SW6

£750,000

A beautifully presented two bedroom ground floor apartment set within a well-maintained period building on one of Parsons Green's most desirable residential streets.

Garden

Two double bedrooms

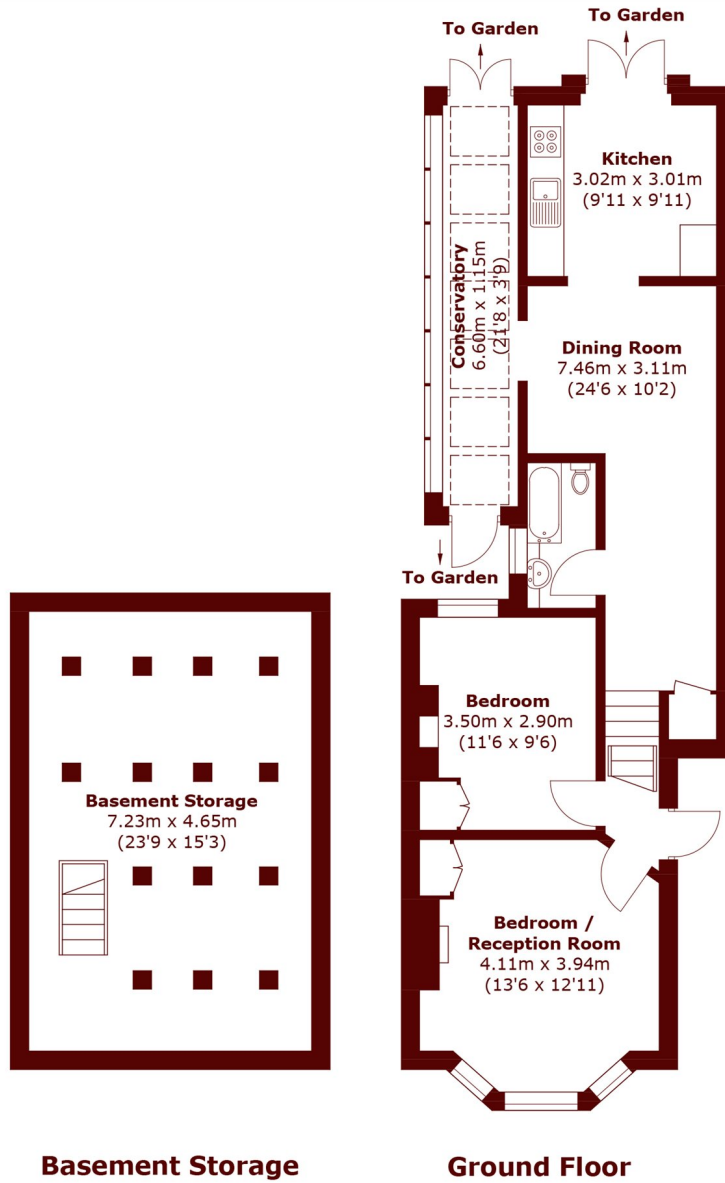
Parsons Green address

Close to South Park

Great condition

Energy rating: c

STEP INSIDE ASHCOMBE STREET



Total area (approx.): 101.3 sq. m (1,090.4 sq. ft)
(Including Basement Storage)

Fulham
020 7736 9822

Energy Rating: C We aim to make our particulars both accurate and reliable. However, they are not guaranteed; nor do they form part of an offer or contract. If you require clarification on any points then please contact us, especially if you're traveling some distance to view. Please note that appliances and heating systems have not been tested and therefore no warranties can be given as to their good working order

MARSH &
PARSONS