



KINGS ROAD, SW6

£1,200,000

Stunning condition
Exceptionally spacious
Two double bedrooms
Two bathrooms
No onward chain
Prime location

@marshandparsons
marshandparsons.co.uk

MARSH &
PARSONS



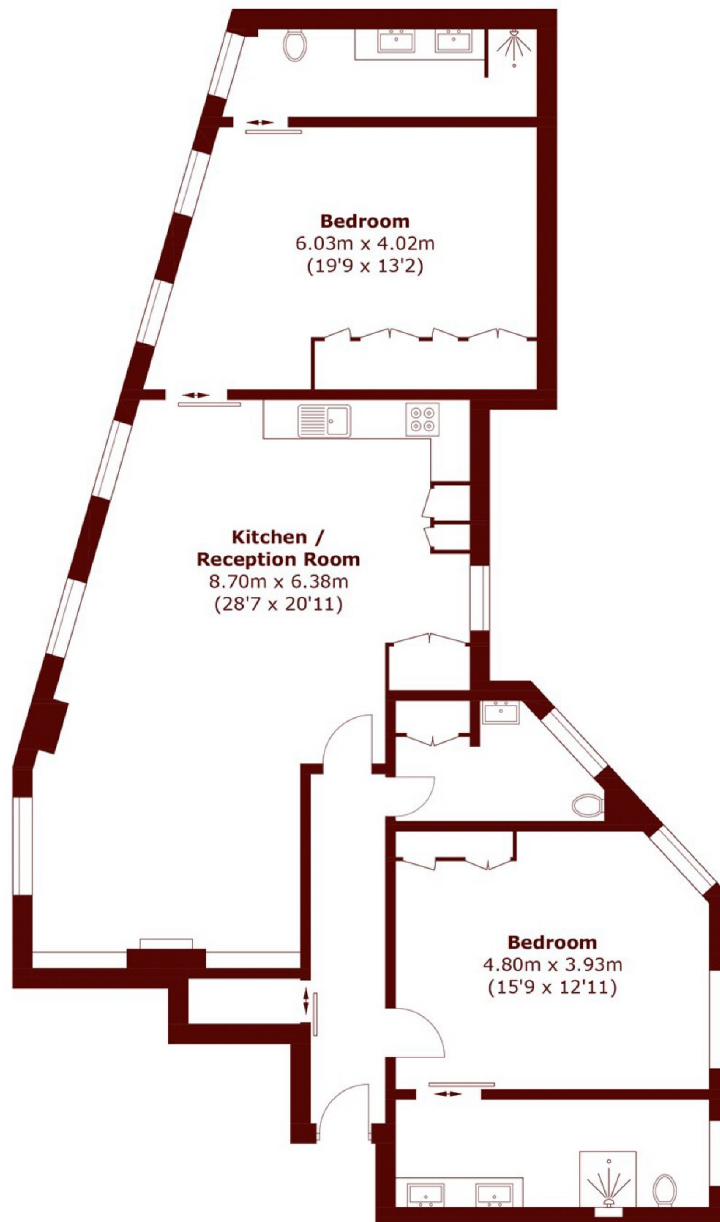
ABOUT THE PROPERTY

A gorgeous two double bedroom apartment with over 1,300sq ft of interior space. This property has been finished to a very high specification and comprises two double bedrooms, an en suite bathroom, reception room, modern fitted kitchen and further family bathroom.

Located on the Fulham/Cheslea border and is a short walk to Fulham Broadway and Imperial Wharf rail.



STEP INSIDE KINGS ROAD



Total area (approx.): 116.1 sq. m (1,249.7 sq. ft)

Fulham
020 7736 9822

Energy Rating: C We aim to make our particulars both accurate and reliable. However, they are not guaranteed; nor do they form part of an offer or contract. If you require clarification on any points then please contact us, especially if you're traveling some distance to view. Please note that appliances and heating systems have not been tested and therefore no warranties can be given as to their good working order

MARSH &
PARSONS