



UPPER BROCKLEY ROAD, SE4

£600,000

Two double bedrooms
Split-level on top floors
Bright 16' lounge
Beautifully presented
Large private garden
Energy rating: D

@marshandparsons
marshandparsons.co.uk

MARSH &
PARSONS



ABOUT THE PROPERTY

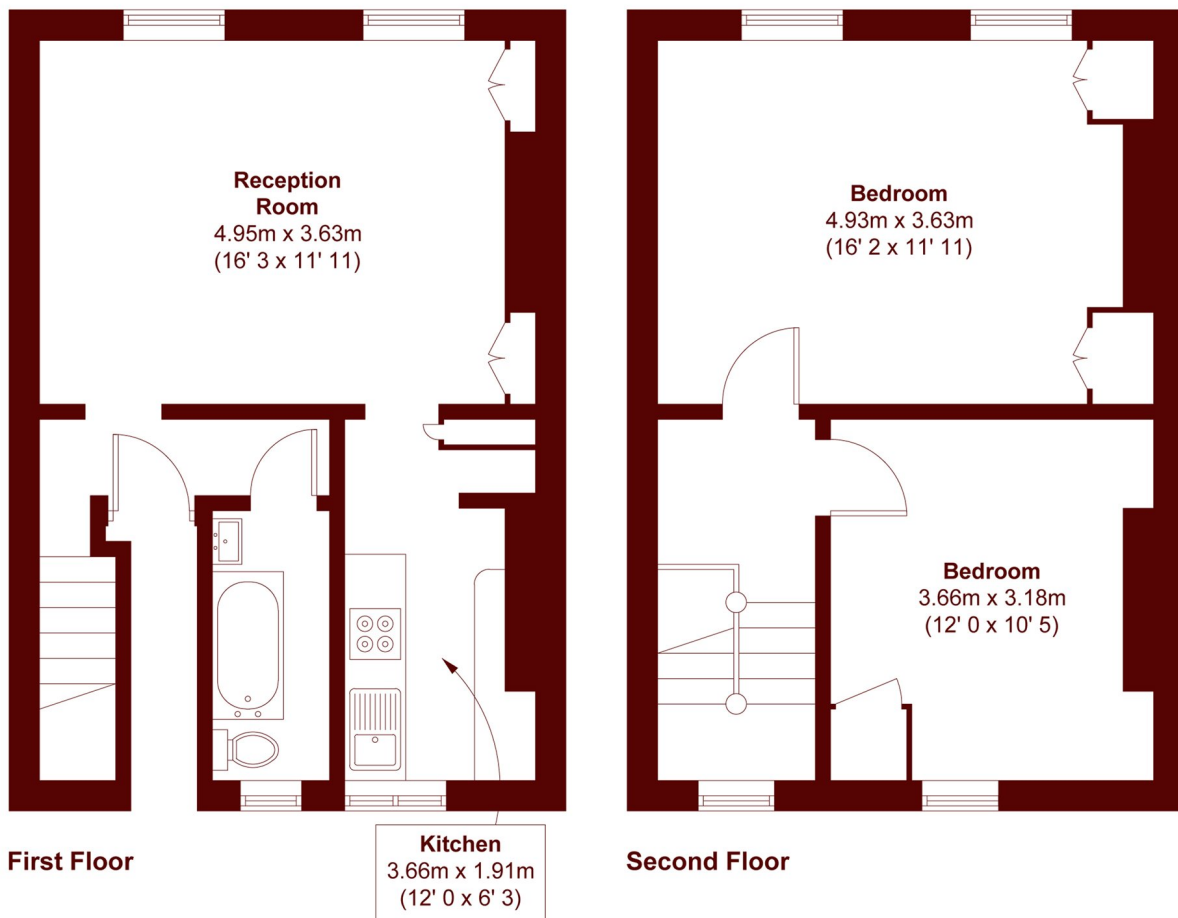
A fabulous two double bedroom split-level apartment arranged over the top two floors of an attractive Victorian townhouse with large private west facing garden.

Beautifully presented this really feels like a 'just move in' home. External works were carried out in 2023. (* Potential for buying the into the freehold in the future - Ask us about this).

Upper Brockley Road is found in the Conservation Area with the overground only a few hundred metres away along with a good choice of independent bars, cafés and bistros.



STEP INSIDE UPPER BROCKLEY ROAD



APPROX. GROSS INTERNAL FLOOR AREA 758 SQFT / 70.4 SQM

Brockley
020 8629 8164

Energy Rating: D We aim to make our particulars both accurate and reliable. However, they are not guaranteed; nor do they form part of an offer or contract. If you require clarification on any points then please contact us, especially if you're traveling some distance to view. Please note that appliances and heating systems have not been tested and therefore no warranties can be given as to their good working order

**MARSH &
PARSONS**