



## GREAT WEST ROAD, TW8

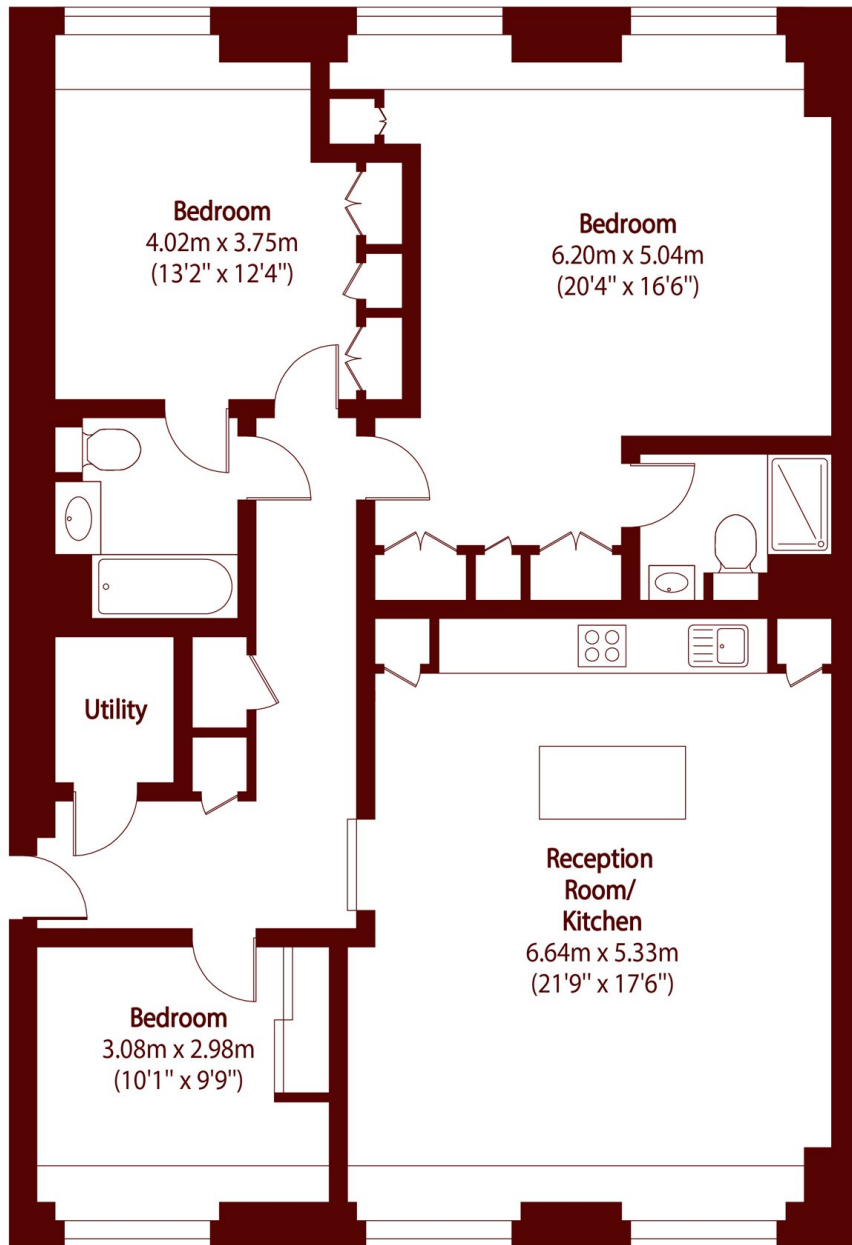
£3,300 per month

A sleek and spacious fourth-floor apartment (1,113 sq ft) within this iconic Brentford development, finished to an excellent standard throughout.

Three bedrooms  
Two bathrooms  
High specification

Underground parking  
Concierge access  
Energy rating: c

# STEP INSIDE GREAT WEST ROAD



Total area (approx): 110.70 sq m (1192 sq. ft)

Chiswick  
020 8629 0900

Energy Rating: C We aim to make our particulars both accurate and reliable. However, they are not guaranteed; nor do they form part of an offer or contract. If you require clarification on any points then please contact us, especially if you're traveling some distance to view. Please note that appliances and heating systems have not been tested and therefore no warranties can be given as to their good working order

MARSH &  
PARSONS