



MUMFORD MILLS, SE10

£450,000

One bedroom conversion flat
Former flour mill
Ample storage space
Private patio garden
Gated development
Energy rating: b



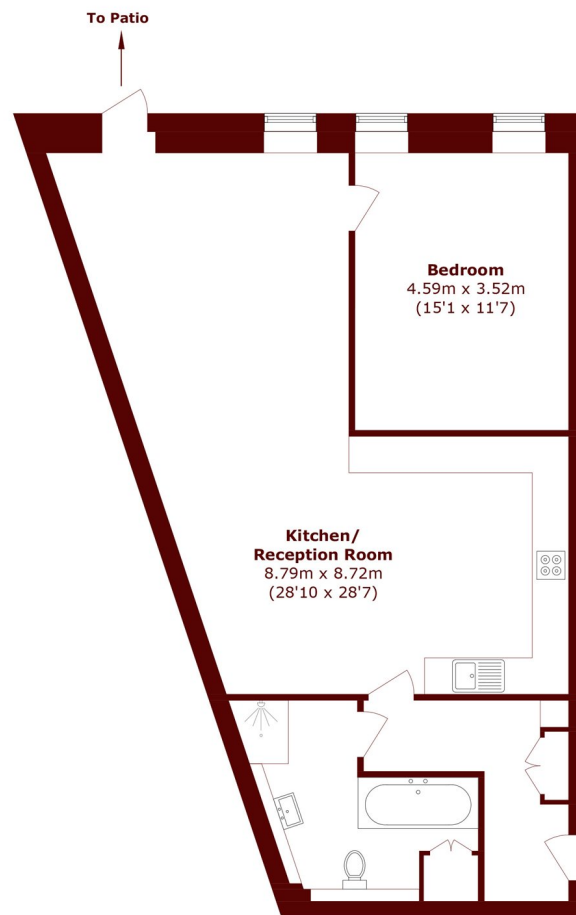
ABOUT THE PROPERTY

A converted apartment extending to 925 Sq Ft, set within the old Mumford Mills. Located in a gated development with concierge service and an exclusive residents' roof garden. Inside this modernised home you will find a large bedroom, bathroom suite with a bath and walk-in shower, an open plan kitchen, a spacious living area, and direct access to a private patio garden.

Deptford Bridge DLR station, a few coffee shops and supermarkets are moments away. There are plenty of bus routes in the immediate area and it's a short walk to either New Cross rail station, Greenwich rail and DLR stations, and Blackheath village and Greenwich town centre are moments away.



STEP INSIDE MUMFORD MILLS



Total Area (approx.): 83.8 sq. m (902.0 sq. ft)

Greenwich
020 8312 8312

Energy Rating: B We aim to make our particulars both accurate and reliable. However, they are not guaranteed; nor do they form part of an offer or contract. If you require clarification on any points then please contact us, especially if you're traveling some distance to view. Please note that appliances and heating systems have not been tested and therefore no warranties can be given as to their good working order

MARSH &
PARSONS