



THE AVENUE, NW6

£7,000 per month

Six Bedroom House
Double Reception
Large Garden
Off-Street Gated Parking
Three Bathroom
Close to High Street

@marshandparsons
marshandparsons.co.uk

MARSH &
PARSONS



ABOUT THE PROPERTY

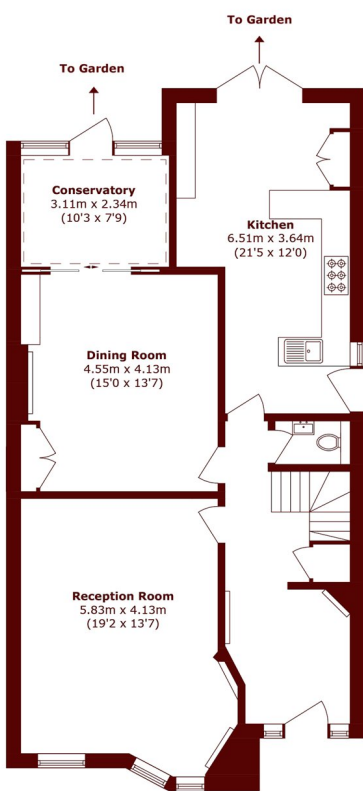
Set on one of Queen's Park's most prestigious and sought-after roads, this impressive semi-detached home arranged over three floors.

On the ground floor, a spacious family reception room provides an ideal setting for both entertaining and everyday living, while a second reception room opens directly onto a beautifully maintained private garden.

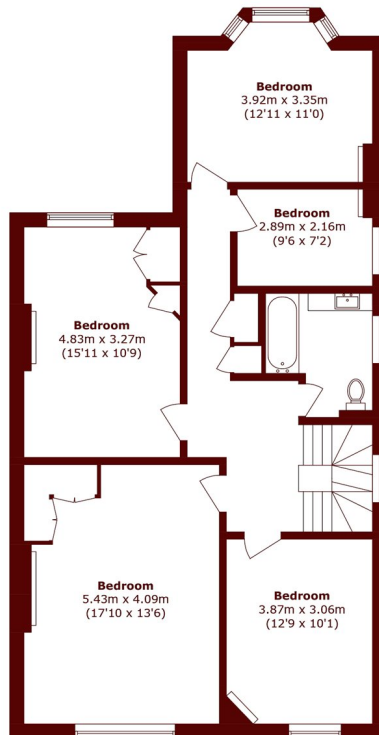
The Avenue is a pretty tree-lined road with easy access to the cafes, restaurants and amenities of Salusbury Road. Local transport include Queen's Park (Bakerloo Line) & Brondesbury Park (London Overground).



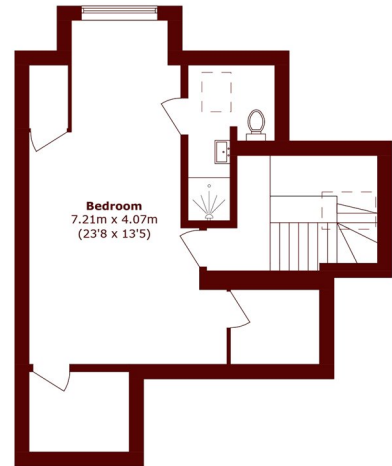
STEP INSIDE THE AVENUE



Ground Floor



First Floor



Second Floor

Total area (approx.): 226.3 sq. m (2436.1 sq. ft)

Queen's Park
020 7871 5050

Energy Rating: C We aim to make our particulars both accurate and reliable. However, they are not guaranteed; nor do they form part of an offer or contract. If you require clarification on any points then please contact us, especially if you're traveling some distance to view. Please note that appliances and heating systems have not been tested and therefore no warranties can be given as to their good working order

**MARSH &
PARSONS**