



BRONDESBURY VILLAS, NW6

£625,000

Two Double Bedrooms
Separate Kitchen
Good Condition Throughout
Share Of Freehold
Chain-Free
Close To Local Amenities

@marshandparsons
marshandparsons.co.uk

MARSH &
PARSONS



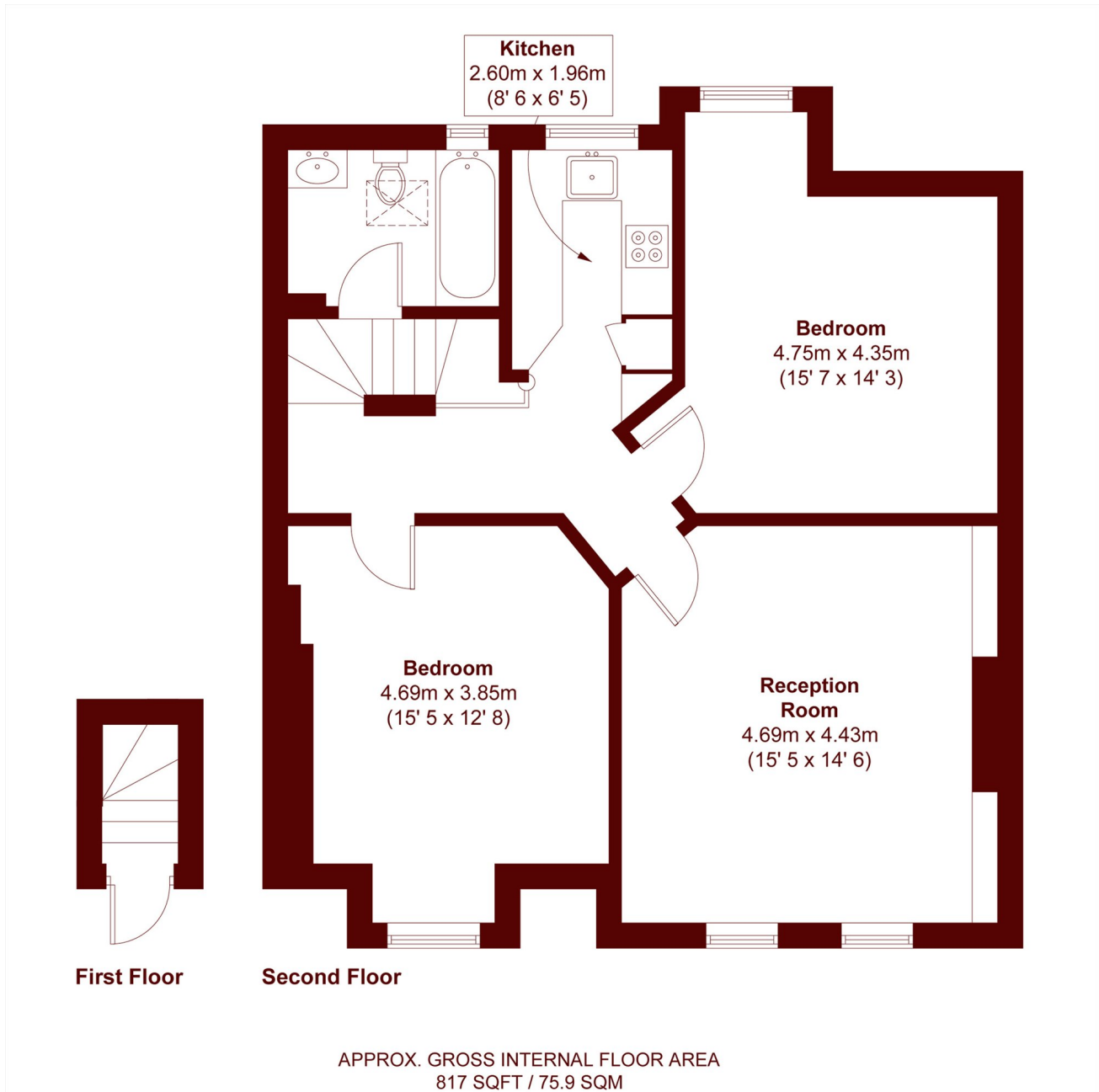
ABOUT THE PROPERTY

This delightful two double bedroom flat in a Victorian conversion presents itself in good condition throughout, arranged over the first and second floors, offering an abundance of living space and natural light. With a large reception room, a separate kitchen, and a modern bathroom, the property is available chain-free.

Set on a quiet tree-lined residential street, Brondesbury Villas is a short walk from the cafes, restaurants and amenities on Salusbury Road and the green open spaces of Queen's Park. Transport links include Queen's Park (Bakerloo) and Kilburn High Road (Overground).



STEP INSIDE BRONDESBURY VILLAS



Queen's Park
020 7624 4513

Energy Rating: D We aim to make our particulars both accurate and reliable. However, they are not guaranteed; nor do they form part of an offer or contract. If you require clarification on any points then please contact us, especially if you're traveling some distance to view. Please note that appliances and heating systems have not been tested and therefore no warranties can be given as to their good working order

MARSH &
PARSONS