



BRONDES BURY ROAD, NW6

£2,400 per month

Two bedrooms
One Bathroom
Balcony
Second floor
Roof Terrace
Close to Queen's Park

@marshandparsons
marshandparsons.co.uk

MARSH &
PARSONS



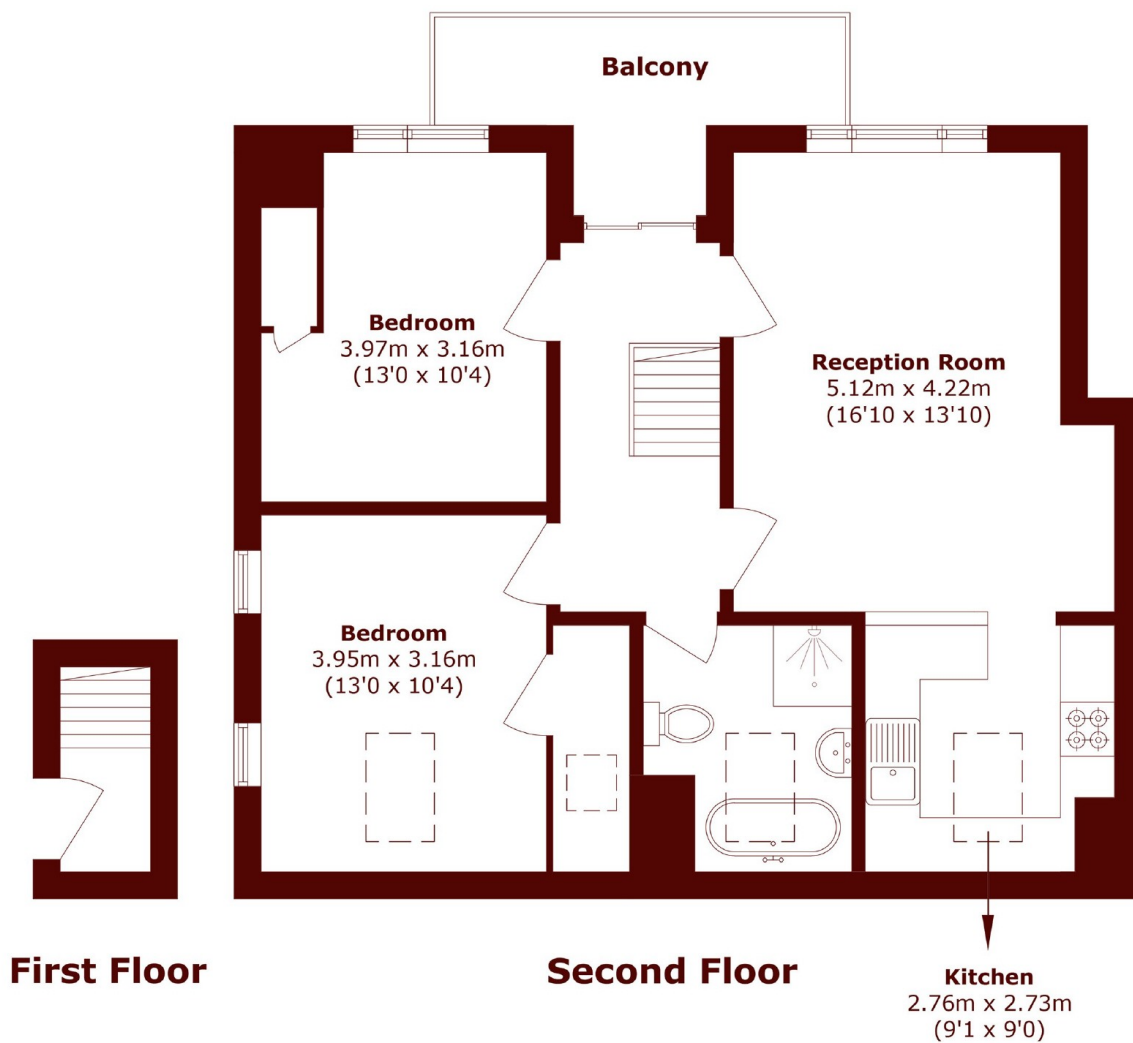
ABOUT THE PROPERTY

A gorgeous two double bed apartment with a roof terrace set on the top floor of a period conversion in the heart of Queens Park. This incredibly spacious flat is set laterally and comprises of two double bedrooms, a family bathroom featuring a freestanding roll top bath-tub and an open plan kitchen/reception with lots of room for dining and entertaining. Benefits include the south-facing roof terrace with lovely views and lots of built-in storage throughout.

Set on a quiet tree-lined residential street, Brondesbury Road is a short walk from the cafes, restaurants and amenities of Salusbury Road and the green open spaces of Queen's Park. Local transport links include Queen's



STEP INSIDE BRONDESURY ROAD



Total area (approx.): 72.9 sq. m (784.7 sq. ft)

Balcony area (approx.): 7.6 sq. m (81.8 sq. ft)

Queen's Park
020 7871 5050

Energy Rating: C We aim to make our particulars both accurate and reliable. However, they are not guaranteed; nor do they form part of an offer or contract. If you require clarification on any points then please contact us, especially if you're traveling some distance to view. Please note that appliances and heating systems have not been tested and therefore no warranties can be given as to their good working order

**MARSH &
PARSONS**