



Kildare Court, W2

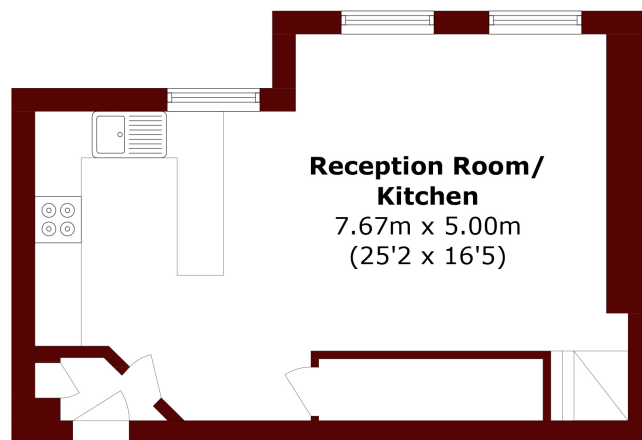
£895 per week (£3,878 pcm)

2 1 1 C

- Excellent Standard
- Duplex apartment
- Open Plan Kitchen



Fourth Floor



Third Floor

Total area (approx.): 70.0 sq. m (753.4 sq. ft)

Marsh & Parsons Notting Hill

2-6 Kensington Park Road,
London, W11 3BU
020 7313 2890