



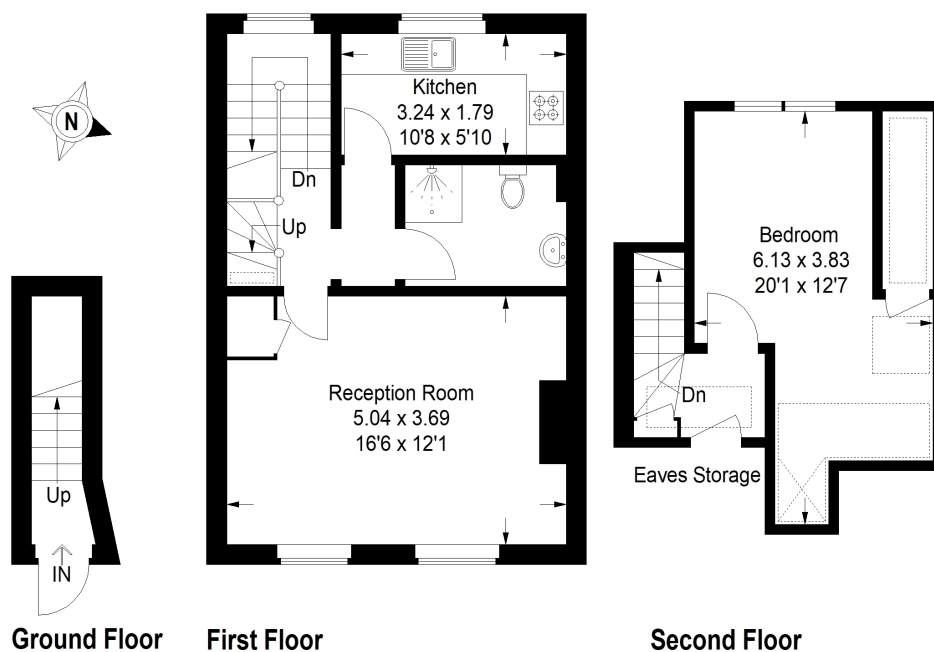
## CHARLTON CHURCH LANE, SE7


£1,550 PCM

A split level one bedroom apartment situated in a Victorian period conversion moments from Charlton station offering National Rail services. The property offers a spacious living room, fully fitted modern

Top floor victorian conversion	Double bedroom
Spacious lounge	Close to transport
Fitted modern kitchen	

# STEP INSIDE CHARLTON CHURCH LANE



 = Reduced headroom below 1.5 m / 5'0

**Approximate Gross Internal Area**  
**Ground Floor = 3.0 sq m / 32 sq ft**  
**First Floor = 38.4 sq m / 413 sq ft**  
**Second Floor = 21.3 sq m / 230 sq ft**  
**Total = 62.7 sq m / 675 sq ft**

**Charlton**  
 020 8293 0454

Energy Rating: D We aim to make our particulars both accurate and reliable. However, they are not guaranteed; nor do they form part of an offer or contract. If you require clarification on any points then please contact us, especially if you're traveling some distance to view. Please note that appliances and heating systems have not been tested and therefore no warranties can be given as to their good working order

**MARSH &  
 PARSONS**