



# PORTOBELLO ROAD, W11

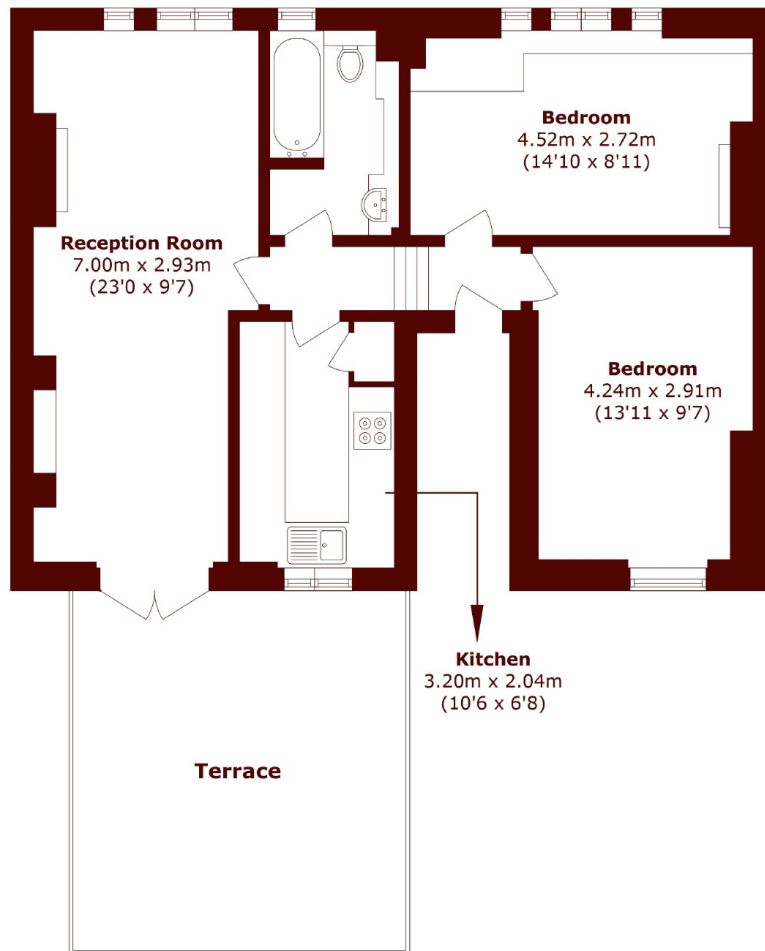
£3,535 per month

This amazing first floor apartment has been refurbished to a high standard throughout.

Two double bedrooms  
First floor  
Newly decorated

Decked roof terrace  
Iconic location  
EPC - C

# STEP INSIDE PORTOBELLO ROAD



Total area (approx.): 61 sq. m (656.6 sq. ft)  
Terrace area (approx.): 20.8 sq. m (223.8 sq. ft)

Notting Hill  
020 7313 6910

Energy Rating: C We aim to make our particulars both accurate and reliable. However, they are not guaranteed; nor do they form part of an offer or contract. If you require clarification on any points then please contact us, especially if you're traveling some distance to view. Please note that appliances and heating systems have not been tested and therefore no warranties can be given as to their good working order

MARSH &  
PARSONS