



## HOLYPORT ROAD, SW6

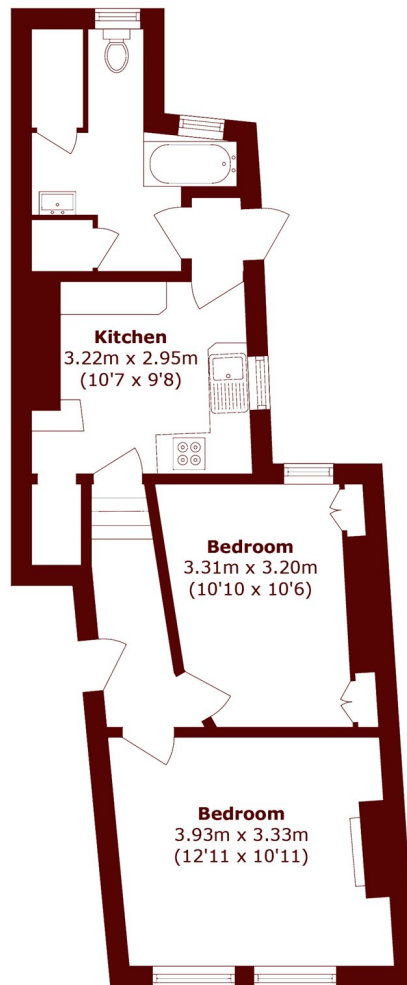
£2,000 per week

A lovely one double bedroom flat occupying the ground floor of a charming period house. This spacious property comprises a bright and airy reception room, large and separate kitchen, spacious double bedroom

One double bedroom  
Bright reception room

Private patio garden  
Quiet residential street

# STEP INSIDE HOLYPORT ROAD



Total area (approx.): 47.0 sq. m (505.9 sq. ft)

**Bishops Park**  
020 7368 2480

Energy Rating: We aim to make our particulars both accurate and reliable. However, they are not guaranteed; nor do they form part of an offer or contract. If you require clarification on any points then please contact us, especially if you're traveling some distance to view. Please note that appliances and heating systems have not been tested and therefore no warranties can be given as to their good working order

**MARSH &  
PARSONS**