



PRINCE OF WALES TERRACE, W8

£1,300 per month

Bright studio
Wooden floors
Separate kitchen
Period building
Incredible location

@marshandparsons
marshandparsons.co.uk

MARSH &
PARSONS



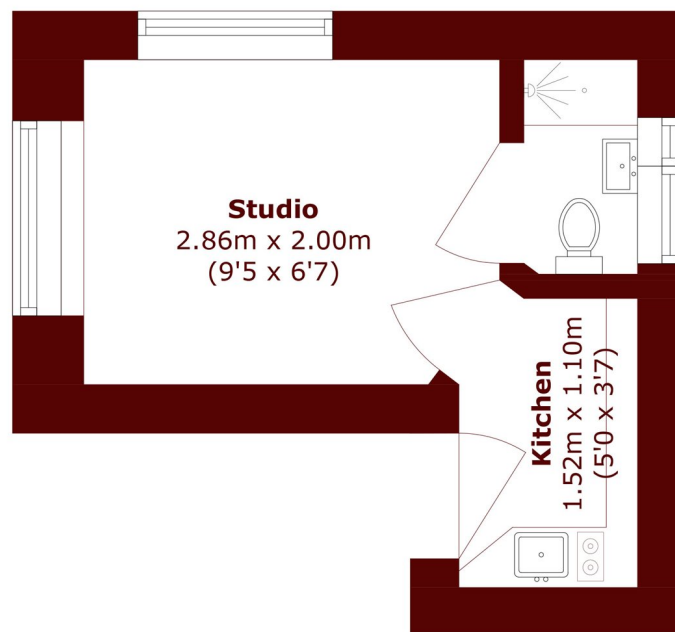
ABOUT THE PROPERTY

A bright studio apartment with a separate kitchen and wooden floors in one of London's most prestigious postcodes opposite Kensington Palace and Hyde Park.

Prince of Wales Terrace is ideally located for the shops, restaurant and transport links of High St Kensington and the Gloucester Road. It is only moments from the open spaces of Hyde Park and Kensington Gardens.



STEP INSIDE PRINCE OF WALES TERRACE



Second Floor

Total area (approx.): 8.4 sq. m (90.4 sq. ft)

Kensington
020 7368 4460

Energy Rating: We aim to make our particulars both accurate and reliable. However, they are not guaranteed; nor do they form part of an offer or contract. If you require clarification on any points then please contact us, especially if you're traveling some distance to view. Please note that appliances and heating systems have not been tested and therefore no warranties can be given as to their good working order

MARSH &
PARSONS