



## LINGFIELD CRESCENT, SE9

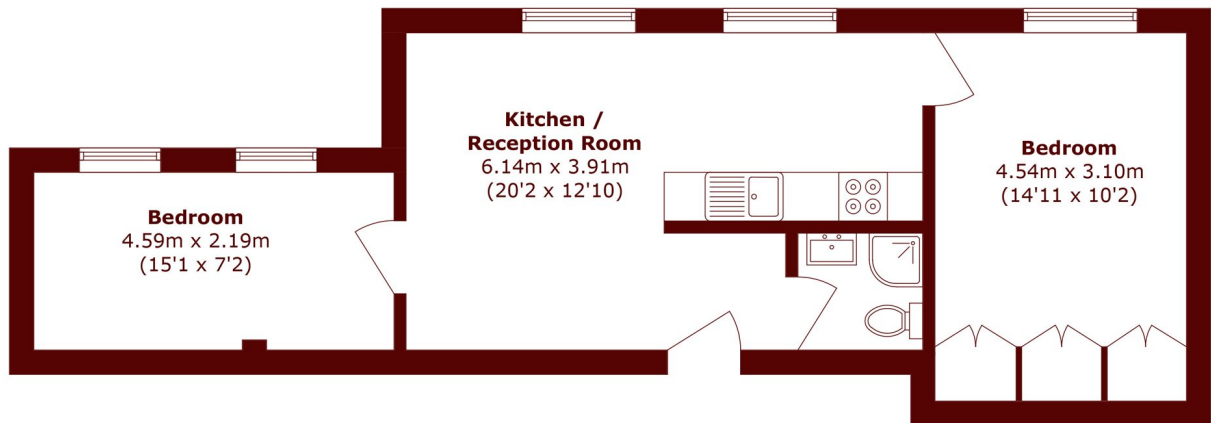
£1,750 PCM

Modern two bedroom apartment situated within walking distance of public transport and benefits from private parking.

Two bedroom apartment  
Living/dining room  
Fitted kitchen

Excellent location  
Parking  
Energy rating: c

# STEP INSIDE LINGFIELD CRESCENT



Total area (approx.): 49.6 sq. m (533.8 sq. ft)

**Charlton**  
020 8293 0454

Energy Rating: C We aim to make our particulars both accurate and reliable. However, they are not guaranteed; nor do they form part of an offer or contract. If you require clarification on any points then please contact us, especially if you're traveling some distance to view. Please note that appliances and heating systems have not been tested and therefore no warranties can be given as to their good working order

**MARSH &  
PARSONS**