



## THE BISHOPS AVENUE, N2

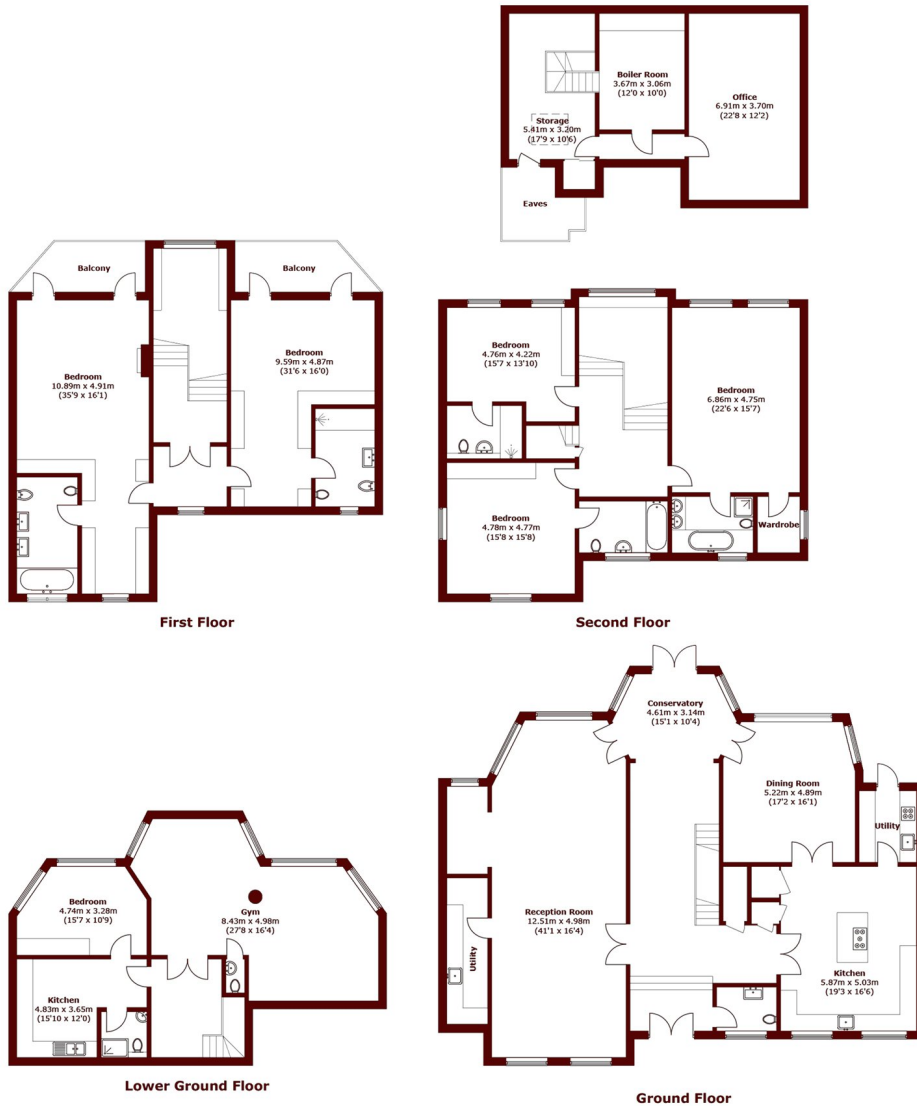
£19,500 per month

Set behind secure gates on The Bishops Avenue, this substantial detached residence offers approximately 6500 sq ft of well-planned accommodation arranged over several floors. Built around 2000, the

Spacious reception  
Six bedrooms  
Five bathrooms

Island kitchen  
Gated driveway  
Detached

# STEP INSIDE THE BISHOPS AVENUE



Total area (approx.): 605.9 sq. m (6,521.8 sq. ft)  
(Excluding Eaves)

Willesden Green  
020 8939 1780

Energy Rating: C We aim to make our particulars both accurate and reliable. However, they are not guaranteed; nor do they form part of an offer or contract. If you require clarification on any points then please contact us, especially if you're traveling some distance to view. Please note that appliances and heating systems have not been tested and therefore no warranties can be given as to their good working order

MARSH &  
PARSONS