



## KIDBROOKE PARK CLOSE, SE3

£550,000

Terraced house  
Three bedrooms  
One reception room  
One bathroom  
Landscaped garden  
Energy rating: D

@marshandparsons  
marshandparsons.co.uk

MARSH &  
PARSONS



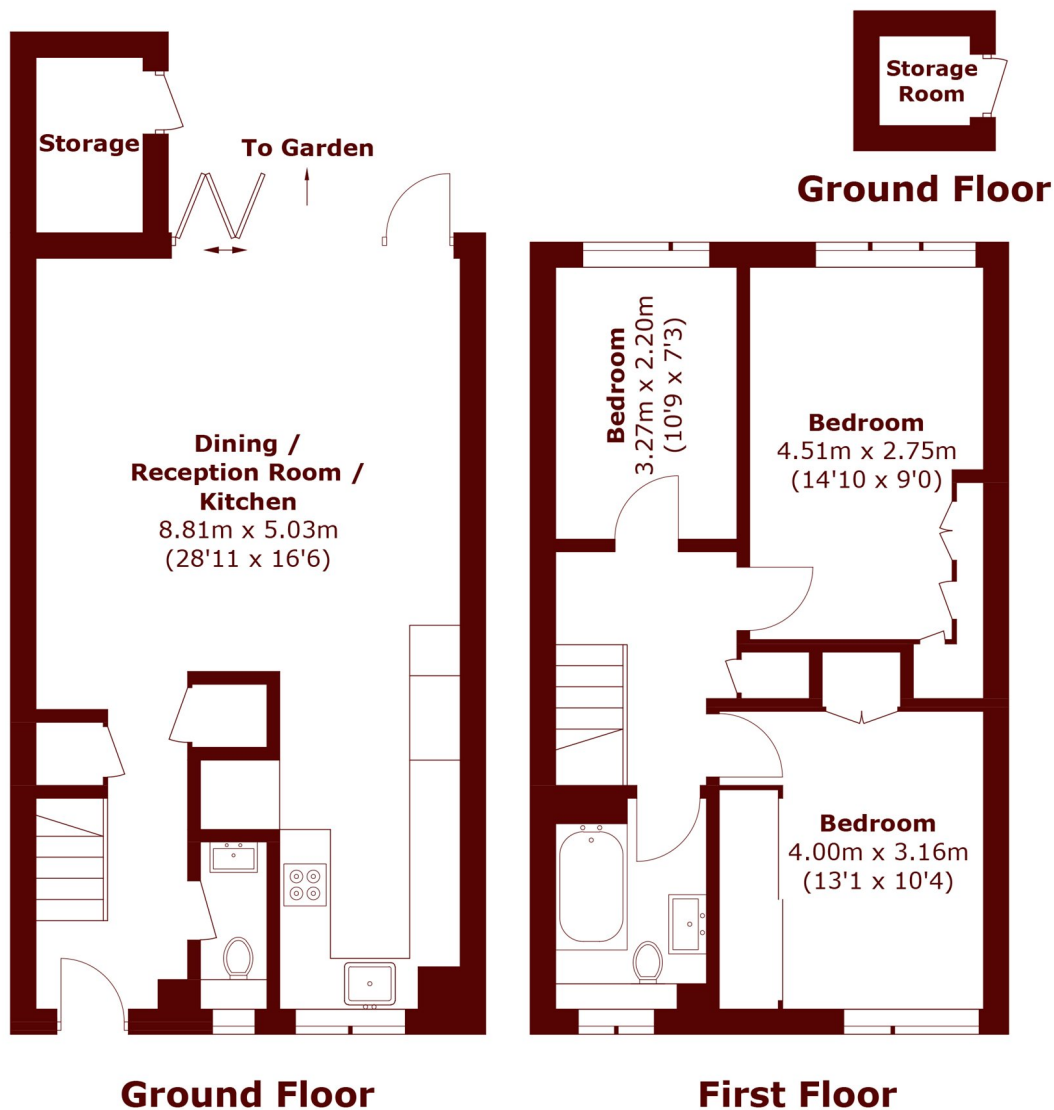
# ABOUT THE PROPERTY

A fully refurbished three bedroom home finished to an exceptional standard, offering stylish, contemporary living in a sought-after location. The property features a bright reception room, modern fitted kitchen, three well-proportioned bedrooms, a sleek family bathroom, and a private landscaped garden.

Kidbrooke/Blackheath location, about 0.6 miles from Kidbrooke Station with direct links to London Bridge, Cannon Street, and the City. Close to bus routes, amenities, schools, and green spaces including Cator Park, Blackheath Common, Greenwich Park, and Blackheath Village.



# STEP INSIDE KIDBROOKE PARK CLOSE



Approx Internal Area (approx.): 90.0 sq. m (968.8 sq. ft)  
(Excluding External Storage)  
External Storage area (approx.): 4.0 sq. m (43.0 sq. ft)

Charlton  
020 8293 0454

Energy Rating: D We aim to make our particulars both accurate and reliable. However, they are not guaranteed; nor do they form part of an offer or contract. If you require clarification on any points then please contact us, especially if you're traveling some distance to view. Please note that appliances and heating systems have not been tested and therefore no warranties can be given as to their good working order

MARSH &  
PARSONS