

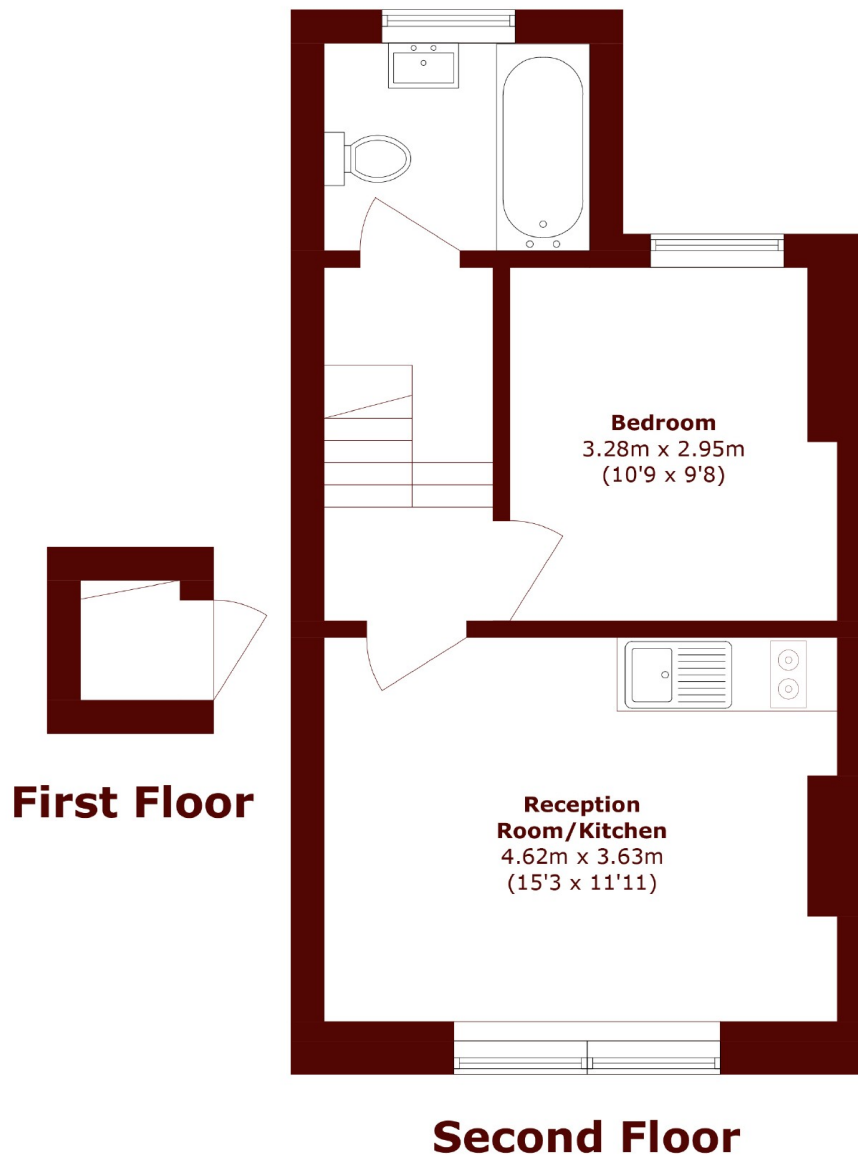


## Portobello Road, W11

£500 per week (£2,166 pcm)



- Modern Finish
- Wood Floors
- Heart of Portobello Road
- First Floor
- Double Bedroom
- Open Plan Kitchen



Total area (approx.): 38.0 sq. m (409.0 sq. ft)

**Marsh & Parsons Notting Hill**

2-6 Kensington Park Road,  
London, W11 3BU  
020 7313 2890