



## BOWEN DRIVE, SE7

£575,000

Flat  
Three Bedrooms  
Two Bathrooms  
Modern  
Private Balcony  
Energy rating: B

@marshandparsons  
marshandparsons.co.uk

MARSH &  
PARSONS



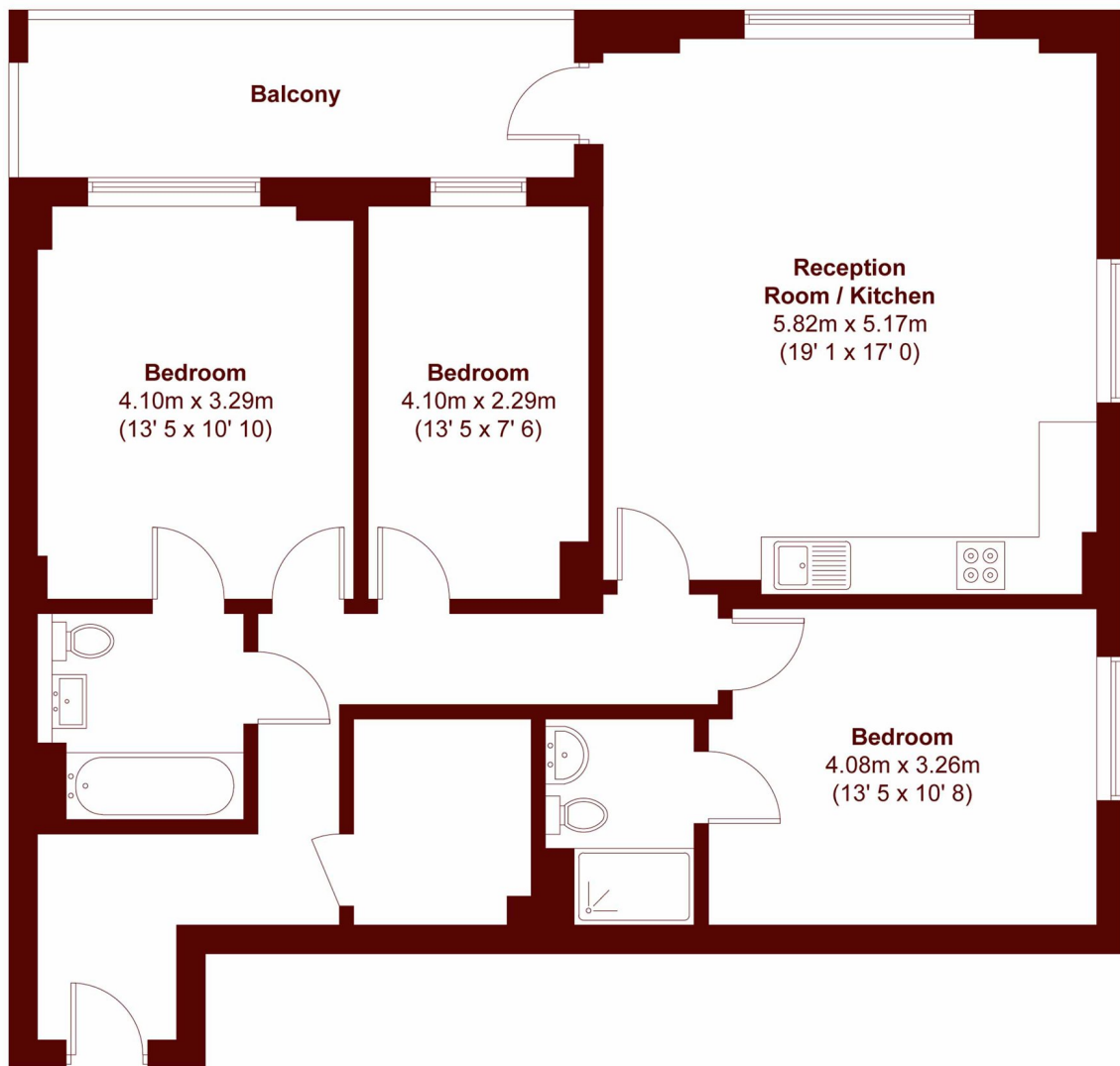
# ABOUT THE PROPERTY

A modern, well-maintained three bedroom apartment in Dillon House featuring a bright open plan living/kitchen area with high-quality finishes and access to a large private balcony. Includes three well-proportioned bedrooms, a main bedroom with en suite, a contemporary family bathroom, and is located on the fifth floor with lift access.

Residents enjoy communal gardens, a children's play area, on-site nursery and convenience store, plus permit parking. Ideally located between Westcombe Park and Charlton stations, it offers excellent links to Central London and Canary Wharf, with Greenwich Shopping Park nearby.



# STEP INSIDE BOWEN DRIVE



APPROX. GROSS INTERNAL FLOOR AREA = 1011 SQFT / 93.9 SQM  
APPROX. GROSS EXTERNAL BALCONY AREA = 8 SQFT / 0.8 SQM

**Charlton**  
020 8293 0454

Energy Rating: B We aim to make our particulars both accurate and reliable. However, they are not guaranteed; nor do they form part of an offer or contract. If you require clarification on any points then please contact us, especially if you're traveling some distance to view. Please note that appliances and heating systems have not been tested and therefore no warranties can be given as to their good working order

**MARSH &  
PARSONS**