



ST. GABRIEL WALK, SE1

£550,000

Exceptional views
Balcony
Chain free
24-hour concierge
Contemporary finish
Air-conditioning

@marshandparsons
marshandparsons.co.uk

MARSH &
PARSONS



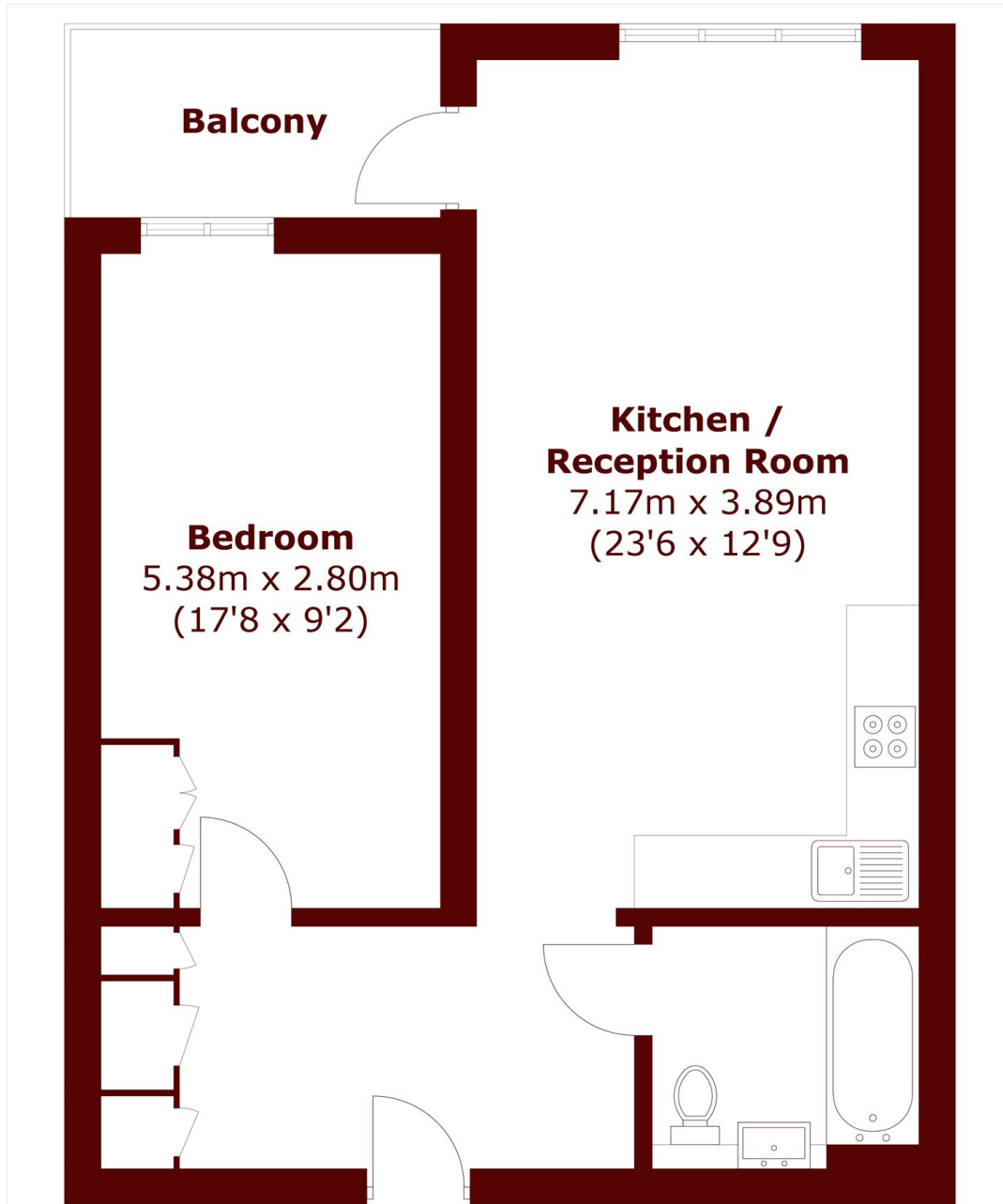
ABOUT THE PROPERTY

A stylish west facing one bedroom apartment set within a sought after modern development. The property features a bright open plan reception room with air-conditioning, a sleek modern kitchen with dining space, a spacious double bedroom with fitted storage, and a contemporary bathroom. A private balcony offers impressive west facing views towards some of London's iconic landmarks.

Residents benefit from a 24-hour concierge, exclusive residents' lounge and beautifully maintained communal gardens. Ideally located for excellent transport connections, with easy access to the Bakerloo and Northern lines, mainline rail services, numerous bus routes and cycle lanes to the West End and the City.



STEP INSIDE ST. GABRIEL WALK



Total area (approx.): 57.5 sq. m (618.9 sq. ft)
Balcony: 4.7 sq. m (50.6 sq. ft)

Kennington
020 7587 1533

Energy Rating: B We aim to make our particulars both accurate and reliable. However, they are not guaranteed; nor do they form part of an offer or contract. If you require clarification on any points then please contact us, especially if you're traveling some distance to view. Please note that appliances and heating systems have not been tested and therefore no warranties can be given as to their good working order

**MARSH &
PARSONS**