



FULHAM PARK GARDENS, SW6

£450,000

A second floor apartment in an attractive period conversion on a sought after road.

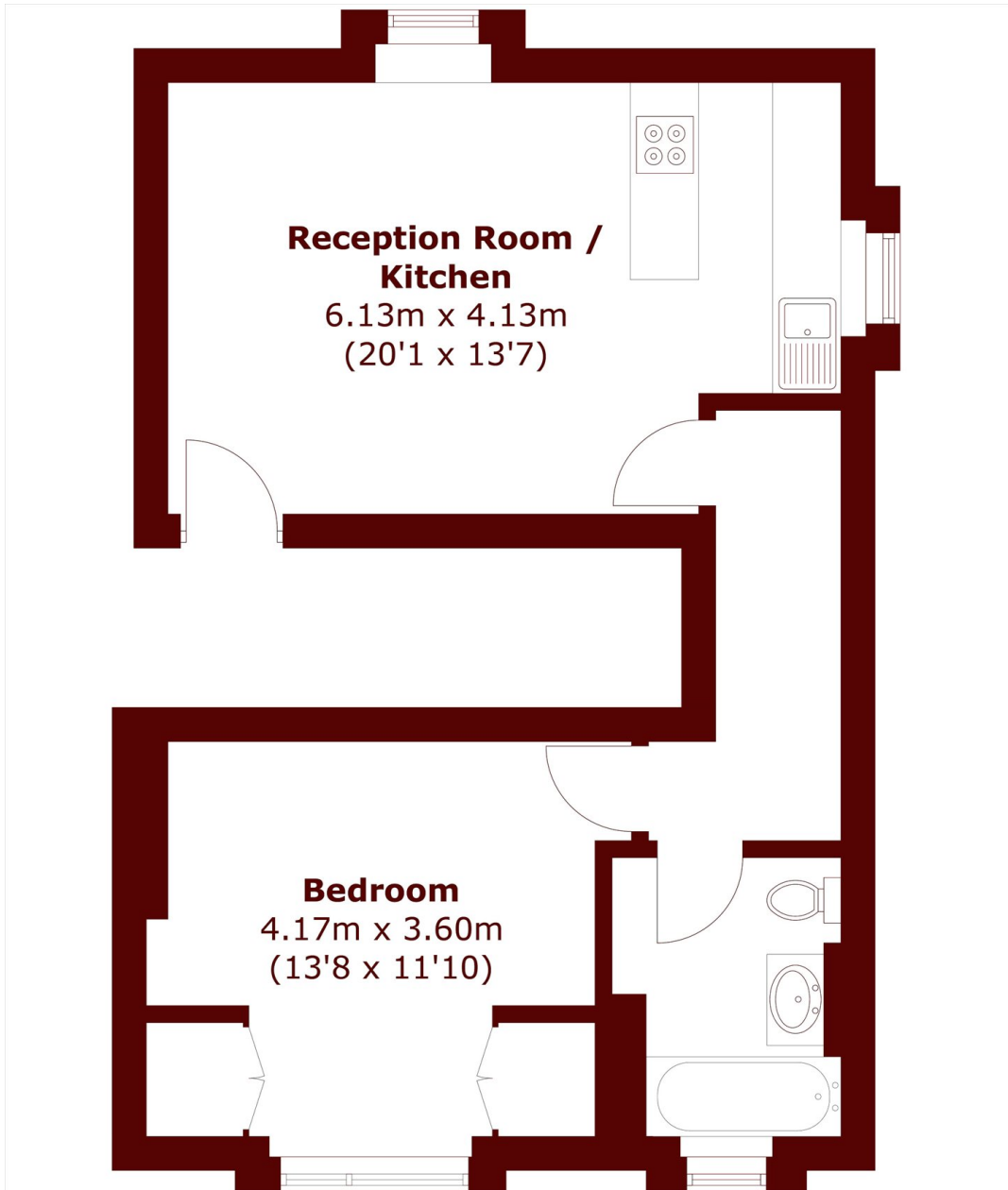
One double bedroom
Period conversion
Newly refurbished

Close to Parsons Green
Flooded with light
Built-in storage

@marshandparsons
marshandparsons.co.uk

MARSH &
PARSONS

STEP INSIDE FULHAM PARK GARDENS



Second Floor

Total area (approx.): 46.2 sq. m (497.3 sq. ft)

Bishops Park
020 7993 9888

Energy Rating: C We aim to make our particulars both accurate and reliable. However, they are not guaranteed; nor do they form part of an offer or contract. If you require clarification on any points then please contact us, especially if you're traveling some distance to view. Please note that appliances and heating systems have not been tested and therefore no warranties can be given as to their good working order

**MARSH &
PARSONS**