



TREVELYAN ROAD, SW17

£575,000

Two double bedrooms
Extra living space
Large communal garden
Residential Road
Victorian Features
EPC: D

@marshandparsons
marshandparsons.co.uk

MARSH &
PARSONS



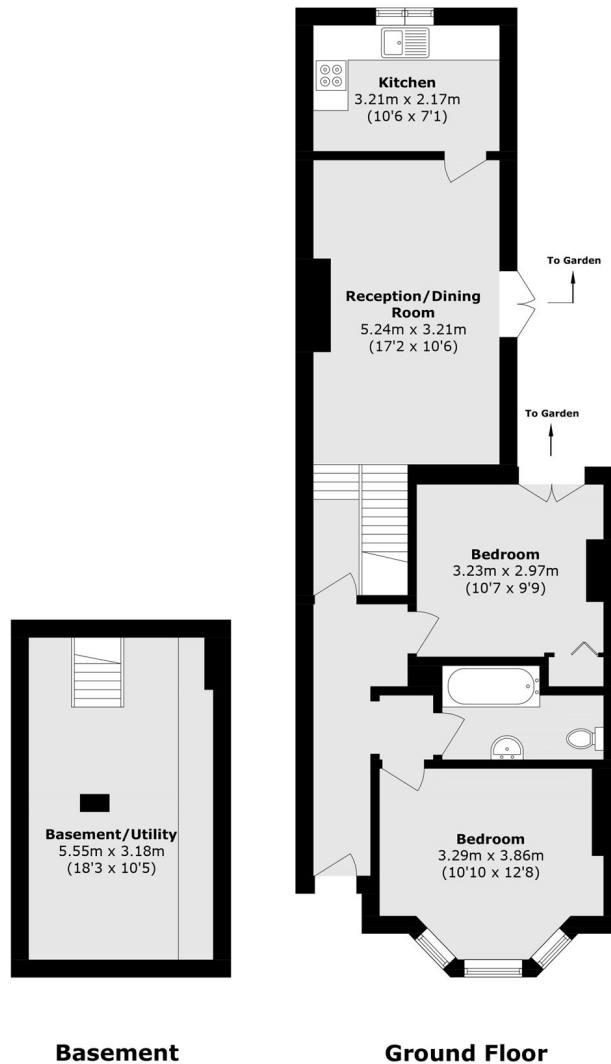
ABOUT THE PROPERTY

This spacious two bedroom ground floor flat is presented with a private garden and a large communal garden.

The generous double bedrooms are located at the front of the building, along with the spacious bathroom. You are then lead down into the large reception room. Access to the garden can be found here, as well as from the second bedroom. The kitchen is located to the rear of the property, with views of the beautiful communal gardens. The property also benefits from having a further large living space in the converted basement.



STEP INSIDE TREVELYAN ROAD



Total area (approx.): 80.8 sq. m (869.7 sq. ft)

Tooting
020 8767 3655

Energy Rating: D We aim to make our particulars both accurate and reliable. However, they are not guaranteed; nor do they form part of an offer or contract. If you require clarification on any points then please contact us, especially if you're traveling some distance to view. Please note that appliances and heating systems have not been tested and therefore no warranties can be given as to their good working order

**MARSH &
PARSONS**