



Coleherne Court, SW5

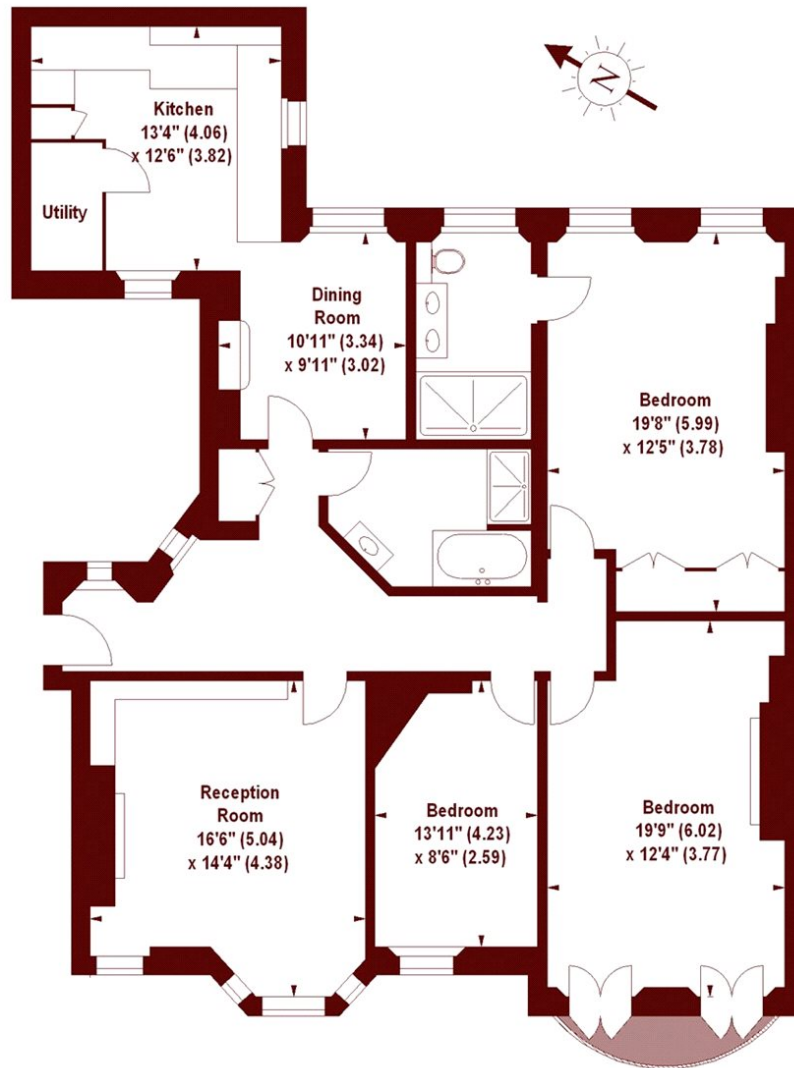
£2,450,000



- Three Double Bedrooms
- Communal Gardens
- Share of Freehold
- West Facing Views
- Porter
- Two Bathrooms

Coleherne Court, SW5

APPROX. GROSS INTERNAL FLOOR AREA 1450 SQFT / 134.71 SQM



THIRD FLOOR

Illustration For Identification Purposes Only. Not To Scale

*Floorplan Drawn According To RICS Guidelines

Copyright of FeaturePRO

Marsh & Parsons Earls Court

246 Old Brompton Road,
Earls Court, London, SW5
020 7590 0800