



KENILWORTH ROAD, NW6

£3,200 per month

Three Bedroom House
Two Receptions
Downstairs WC
Garden
Great Location
Wooden Floors

@marshandparsons
marshandparsons.co.uk

MARSH &
PARSONS



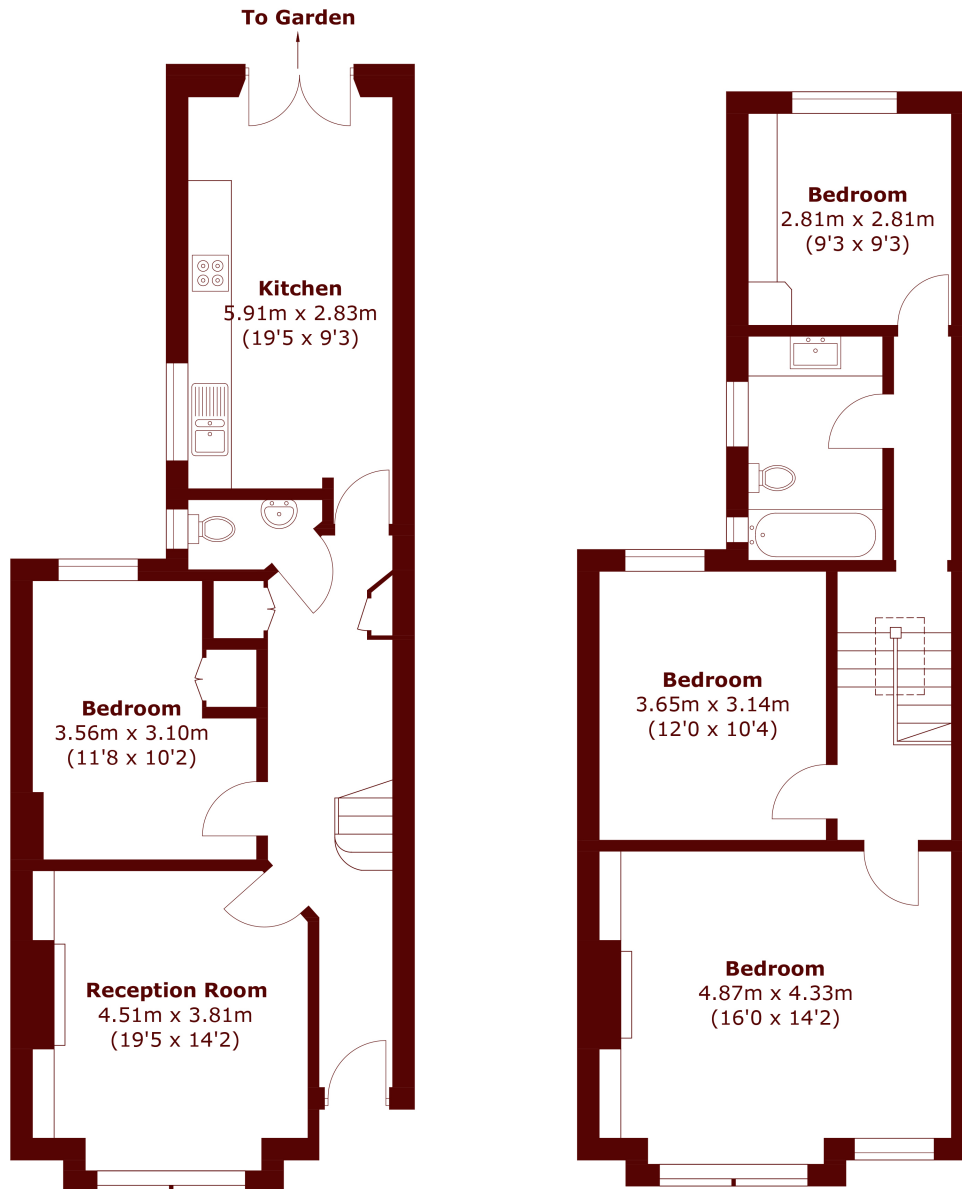
ABOUT THE PROPERTY

A three double bedroom property in Queens Park. Ground floor layout includes two reception rooms and a kitchen diner with direct garden access. Upstairs has three double bedrooms and a newly refurbished family bathroom.

Kenilworth Road is moments from Queens Park and great for transport links with the underground and overground.



STEP INSIDE KENILWORTH ROAD



Ground Floor

First Floor

Total area (approx.): 115.0 sq. m (1237.9 sq. ft)

Queen's Park
020 7871 5050

Energy Rating: E We aim to make our particulars both accurate and reliable. However, they are not guaranteed; nor do they form part of an offer or contract. If you require clarification on any points then please contact us, especially if you're traveling some distance to view. Please note that appliances and heating systems have not been tested and therefore no warranties can be given as to their good working order

**MARSH &
PARSONS**