



## CHISWICK HIGH ROAD, W4

£380,000

One double bedroom  
Lift access  
Modern finish  
Close to transport  
Close to amenities  
Energy rating: d

@marshandparsons  
marshandparsons.co.uk

MARSH &  
PARSONS



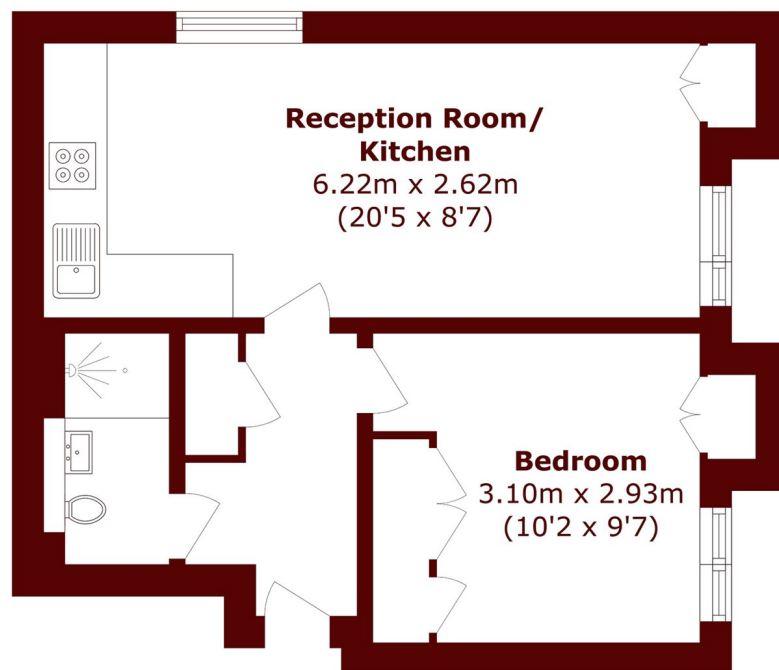
# ABOUT THE PROPERTY

A bright and modern one bedroom, purpose-built apartment in this sought-after development. With lift access, open-plan kitchen/reception and offered with no onward chain - perfect as a first time buy or investment.

Chiswick High Road offers a brilliant array of shops, restaurants and cafés to choose from, as well as being serviced by Gunnersbury and Chiswick Park stations. The Thames riverside and Chiswick House and grounds are popular spots nearby.



# STEP INSIDE CHISWICK HIGH ROAD



Total area (approx.): 34.4 sq. m (370.2 sq. ft)

Chiswick  
020 8994 2556

Energy Rating: D We aim to make our particulars both accurate and reliable. However, they are not guaranteed; nor do they form part of an offer or contract. If you require clarification on any points then please contact us, especially if you're traveling some distance to view. Please note that appliances and heating systems have not been tested and therefore no warranties can be given as to their good working order

MARSH &  
PARSONS