



HUNTS PAPER FACTORY, SW6

£500,000

- One bedroom
- Central Fulham location
- Large open plan living room
- Share of freehold
- 1st floor
- Gated development

@marshandparsons
marshandparsons.co.uk

MARSH &
PARSONS

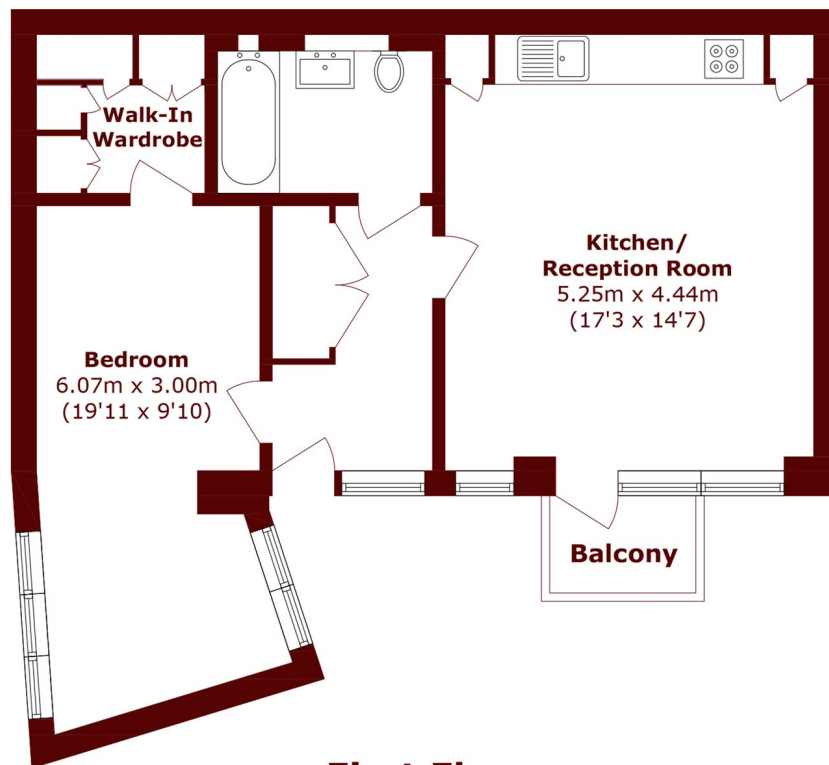


ABOUT THE PROPERTY

Located on the first floor of a fantastic modern development in the heart of Fulham this one bedroom flat sits on the eastern side of this fantastic new build scheme. The development itself is built around an original Edwardian paper factory built in 1902 which was then further extended in an Art Deco style. The flat benefits from a wonderful bedroom suite with dressing area and the living space is perfectly sized and laid out in an open plan style. Located on a quiet tree-lined road and in an original Edwardian commercial building, this recently refurbished first floor apartment has been immaculately finished throughout; from the oak parquet flooring to the kitchen finishes.



STEP INSIDE HUNTS PAPER FACTORY



First Floor

Total Area (approx.): 56.5 sq. m (608.1 sq. ft)

Balcony area (approx.): 2.0 sq. m (21.5 sq. ft)

Bishops Park
020 7993 9888

Energy Rating: We aim to make our particulars both accurate and reliable. However, they are not guaranteed; nor do they form part of an offer or contract. If you require clarification on any points then please contact us, especially if you're traveling some distance to view. Please note that appliances and heating systems have not been tested and therefore no warranties can be given as to their good working order

**MARSH &
PARSONS**