



## HARWOOD ROAD, SW6

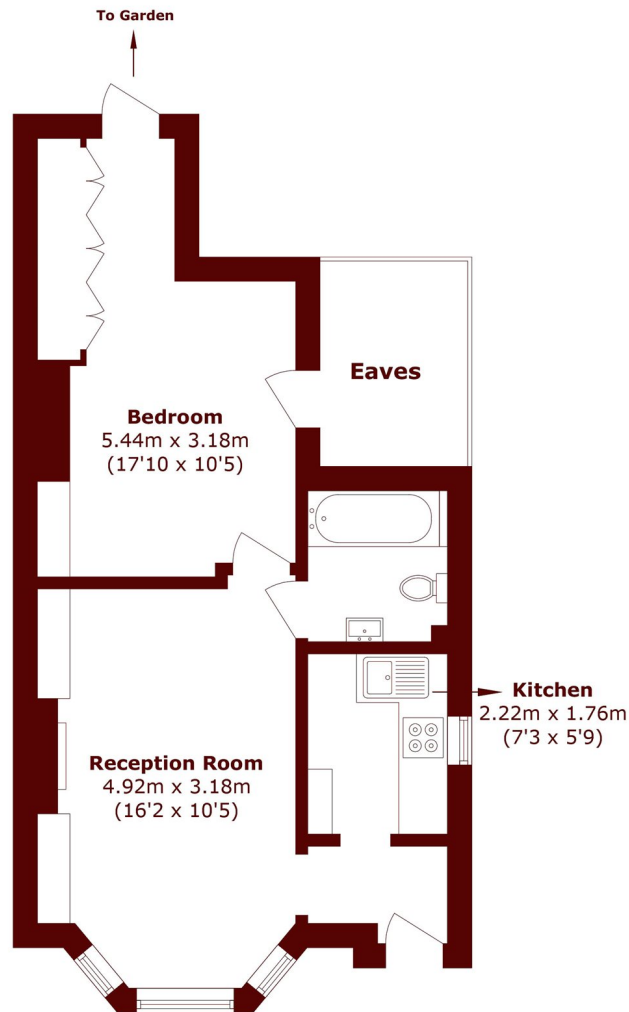
£475,000

A well-presented one bedroom apartment with its own private entrance, located in an end-of-terrace building just two minutes from Fulham Broadway. The property is exceptionally bright throughout and benefits

Excellent Condition  
Private Patio  
Close to Tube

Private Entrance  
Long Lease  
Double Bedroom

# STEP INSIDE HARWOOD ROAD



Total area (approx.): 39.9 sq. m (429.4 sq. ft)  
(Excluding Eaves)

**Fulham**  
020 7736 9822

Energy Rating: We aim to make our particulars both accurate and reliable. However, they are not guaranteed; nor do they form part of an offer or contract. If you require clarification on any points then please contact us, especially if you're traveling some distance to view. Please note that appliances and heating systems have not been tested and therefore no warranties can be given as to their good working order

**MARSH &  
PARSONS**